

Anti-MRPL39 Antibody
Rabbit polyclonal antibody to MRPL39
Catalog # AP60106**Specification**

Anti-MRPL39 Antibody - Product Information

Application	WB, IH
Primary Accession	Q9NYK5
Other Accession	Q9JKE7
Reactivity	Human, Mouse, Rat
Host	Rabbit
Clonality	Polyclonal
Calculated MW	38712

Anti-MRPL39 Antibody - Additional Information**Gene ID** 54148**Other Names**

C21orf92; MRPL5; RPML5; 39S ribosomal protein L39 mitochondrial; L39mt; MRP-L39; 39S ribosomal protein L5 mitochondrial; L5mt; MRP-L5

Target/Specificity

Recognizes endogenous levels of MRPL39 protein.

Dilution

WB~~WB (1/500 - 1/1000), IH (1/100 - 1/200)

IH~~WB (1/500 - 1/1000), IH (1/100 - 1/200)

Format

Liquid in 0.42% Potassium phosphate, 0.87% Sodium chloride, pH 7.3, 30% glycerol, and 0.09% (W/V) sodium azide.

Storage

Store at -20 °C. Stable for 12 months from date of receipt

Anti-MRPL39 Antibody - Protein Information**Name** MRPL39**Synonyms** C21orf92, MRPL5, RPML5**Cellular Location**

Mitochondrion

Tissue Location

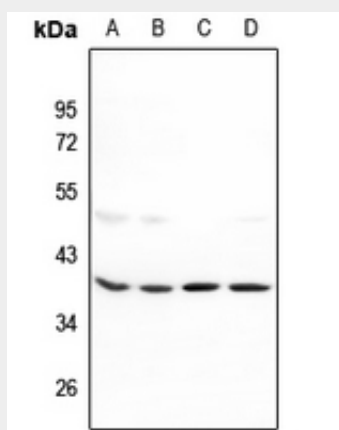
Isoform 1 is ubiquitously expressed. Isoform 2 is heart-specific

Anti-MRPL39 Antibody - Protocols

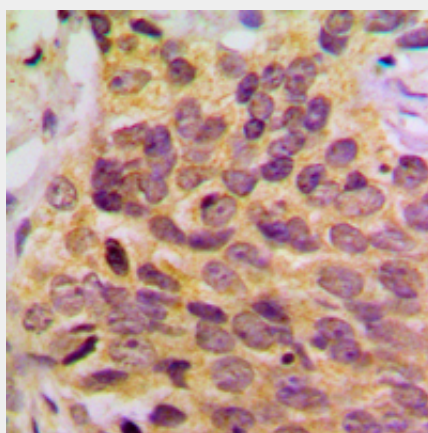
Provided below are standard protocols that you may find useful for product applications.

- [Western Blot](#)
- [Blocking Peptides](#)
- [Dot Blot](#)
- [Immunohistochemistry](#)
- [Immunofluorescence](#)
- [Immunoprecipitation](#)
- [Flow Cytometry](#)
- [Cell Culture](#)

Anti-MRPL39 Antibody - Images



Western blot analysis of MRPL39 expression in HepG2 (A), LO2 (B), H9C2 (C), AML12 (D) whole cell lysates.



Immunohistochemical analysis of MRPL39 staining in human breast cancer formalin fixed paraffin embedded tissue section. The section was pre-treated using heat mediated antigen retrieval with sodium citrate buffer (pH 6.0). The section was then incubated with the antibody at room temperature and detected using an HRP conjugated compact polymer system. DAB was used as the chromogen. The section was then counterstained with haematoxylin and mounted with DPX.

Anti-MRPL39 Antibody - Background

KLH-conjugated synthetic peptide encompassing a sequence within the C-term region of human

MRPL39. The exact sequence is proprietary.