

Anti-BAIAP2L1 Antibody
Rabbit polyclonal antibody to BAIAP2L1
Catalog # AP60109**Specification**

Anti-BAIAP2L1 Antibody - Product Information

Application	WB, IHC
Primary Accession	O9UHR4
Other Accession	O9DBJ3
Reactivity	Human, Mouse, Rat
Host	Rabbit
Clonality	Polyclonal
Calculated MW	56883

Anti-BAIAP2L1 Antibody - Additional Information**Gene ID** 55971**Other Names**

IRTKS; Brain-specific angiogenesis inhibitor 1-associated protein 2-like protein 1; BAI1-associated protein 2-like protein 1; Insulin receptor tyrosine kinase substrate

Target/Specificity

Recognizes endogenous levels of BAIAP2L1 protein.

Dilution

WB~~WB (1/500 - 1/1000), IH (1/100 - 1/200)

IHC~~1:100~500

Format

Liquid in 0.42% Potassium phosphate, 0.87% Sodium chloride, pH 7.3, 30% glycerol, and 0.09% (W/V) sodium azide.

Storage

Store at -20 °C.Stable for 12 months from date of receipt

Anti-BAIAP2L1 Antibody - Protein Information**Name** BAIAP2L1**Synonyms** IRTKS**Function**

May function as adapter protein. Involved in the formation of clusters of actin bundles. Plays a role in the reorganization of the actin cytoskeleton in response to bacterial infection.

Cellular Location

Cytoplasm, cytoskeleton. Note=Recruited to actin pedestals that are formed upon infection by

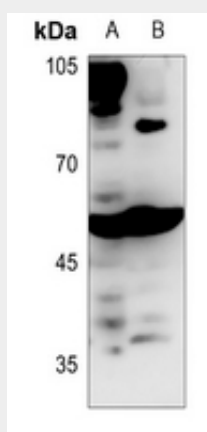
bacteria at bacterial attachment sites

Anti-BAIAP2L1 Antibody - Protocols

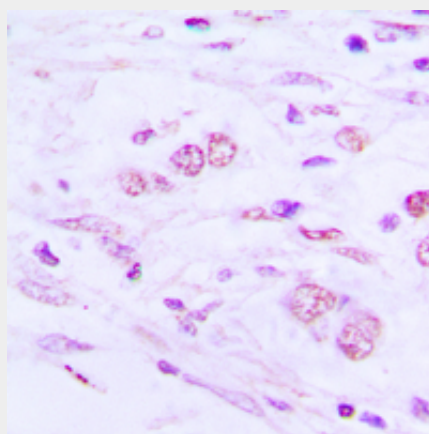
Provided below are standard protocols that you may find useful for product applications.

- [Western Blot](#)
- [Blocking Peptides](#)
- [Dot Blot](#)
- [Immunohistochemistry](#)
- [Immunofluorescence](#)
- [Immunoprecipitation](#)
- [Flow Cytometry](#)
- [Cell Culture](#)

Anti-BAIAP2L1 Antibody - Images



Western blot analysis of BAIAP2L1 expression in rat liver (A), rat heart (B) whole cell lysates.



Immunohistochemical analysis of BAIAP2L1 staining in human lung cancer formalin fixed paraffin embedded tissue section. The section was pre-treated using heat mediated antigen retrieval with sodium citrate buffer (pH 6.0). The section was then incubated with the antibody at room temperature and detected using an HRP conjugated compact polymer system. DAB was used as the chromogen. The section was then counterstained with haematoxylin and mounted with DPX.

Anti-BAIAP2L1 Antibody - Background

KLH-conjugated synthetic peptide encompassing a sequence within the center region of human BAIAP2L1. The exact sequence is proprietary.