

**Anti-KCNK15 Antibody**  
**Rabbit polyclonal antibody to KCNK15**  
**Catalog # AP60113****Specification**

---

**Anti-KCNK15 Antibody - Product Information**

Application	WB, IH
Primary Accession	<a href="#">Q9H427</a>
Reactivity	Human, Rat
Host	Rabbit
Clonality	Polyclonal
Calculated MW	36222

**Anti-KCNK15 Antibody - Additional Information****Gene ID** 60598**Other Names**

TASK5; Potassium channel subfamily K member 15; Acid-sensitive potassium channel protein TASK-5; TWIK-related acid-sensitive K(+) channel 5; Two pore potassium channel KT3.3; Two pore K(+) channel KT3.3

**Target/Specificity**

Recognizes endogenous levels of KCNK15 protein.

**Dilution**

WB~~WB (1/500 - 1/1000), IH (1/100 - 1/200)

IH~~WB (1/500 - 1/1000), IH (1/100 - 1/200)

**Format**

Liquid in 0.42% Potassium phosphate, 0.87% Sodium chloride, pH 7.3, 30% glycerol, and 0.09% (W/V) sodium azide.

**Storage**

Store at -20 °C. Stable for 12 months from date of receipt

**Anti-KCNK15 Antibody - Protein Information****Name** KCNK15**Synonyms** TASK5**Function**

Probable potassium channel subunit. No channel activity observed in heterologous systems. May need to associate with another protein to form a functional channel.

**Cellular Location**

Membrane; Multi-pass membrane protein.

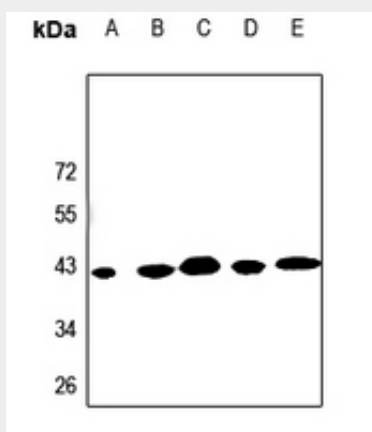
**Tissue Location**

Detected in pancreas, heart, placenta, lung, liver, kidney, ovary, testis, skeletal muscle and adrenal gland, and at lower levels in prostate, spleen and thyroid gland

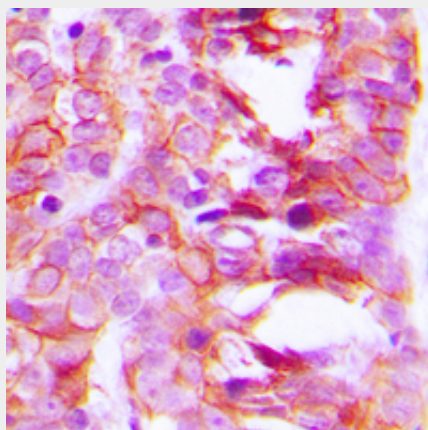
**Anti-KCNK15 Antibody - Protocols**

Provided below are standard protocols that you may find useful for product applications.

- [Western Blot](#)
- [Blocking Peptides](#)
- [Dot Blot](#)
- [Immunohistochemistry](#)
- [Immunofluorescence](#)
- [Immunoprecipitation](#)
- [Flow Cytometry](#)
- [Cell Culture](#)

**Anti-KCNK15 Antibody - Images**

Western blot analysis of KCNK15 expression in Panc1 (A), A549 (B), A2780 (C), H9C2 (D), MEF (E) whole cell lysates.



Immunohistochemical analysis of KCNK15 staining in human breast cancer formalin fixed paraffin embedded tissue section. The section was pre-treated using heat mediated antigen retrieval with sodium citrate buffer (pH 6.0). The section was then incubated with the antibody at room temperature and detected using an HRP conjugated compact polymer system. DAB was used as

the chromogen. The section was then counterstained with haematoxylin and mounted with DPX.

#### **Anti-KCNK15 Antibody - Background**

KLH-conjugated synthetic peptide encompassing a sequence within the C-term region of human KCNK15. The exact sequence is proprietary.