

**Anti-CHSY2 Antibody**  
**Rabbit polyclonal antibody to CHSY2**  
**Catalog # AP60115****Specification**

---

**Anti-CHSY2 Antibody - Product Information**

Application	WB, IF/IC, IHC
Primary Accession	<a href="#">Q8IZ52</a>
Reactivity	Human, Monkey
Host	Rabbit
Clonality	Polyclonal
Calculated MW	85467

**Anti-CHSY2 Antibody - Additional Information****Gene ID** 79586**Other Names**

CSS2; Chondroitin sulfate synthase 2; Chondroitin glucuronyltransferase 2;  
Chondroitin-polymerizing factor; ChPF; Glucuronosyl-N-acetylgalactosaminyl-proteoglycan  
4-beta-N-acetylgalactosaminyltransferase II; N-acetylgalactosaminyl-proteoglycan  
3-beta-glucuronosyltransferase II; N-acetylgalactosaminyltransferase 2

**Target/Specificity**

KLH-conjugated synthetic peptide encompassing a sequence within the C-term region of human CHSY2. The exact sequence is proprietary.

**Dilution**

WB~~WB (1/500 - 1/1000), IH (1/100 - 1/200), IF/IC (1/100 - 1/500)  
IF/IC~~N/A  
IHC~~1:100~500

**Format**

Liquid in 0.42% Potassium phosphate, 0.87% Sodium chloride, pH 7.3, 30% glycerol, and 0.09% (W/V) sodium azide.

**Storage**

Store at -20 °C. Stable for 12 months from date of receipt

**Anti-CHSY2 Antibody - Protein Information****Name** CHPF ([HGNC:24291](#))**Synonyms** CSS2**Function**

Has both beta-1,3-glucuronic acid and beta-1,4-N- acetylgalactosamine transferase activity.  
Transfers glucuronic acid (GlcUA) from UDP-GlcUA and N-acetylgalactosamine (GalNAc) from UDP-

GalNAc to the non-reducing end of the elongating chondroitin polymer. Seems to act as a specific activating factor for CHSY1 in chondroitin polymerization (PubMed:<a href="http://www.uniprot.org/citations/12716890" target="\_blank">12716890</a>).

#### Cellular Location

[Isoform 1]: Golgi apparatus, Golgi stack membrane; Single-pass type II membrane protein.  
Cytoplasm, cytosol [Isoform 2]: Mitochondrion matrix

#### Tissue Location

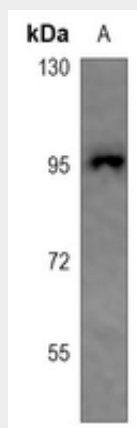
Ubiquitous. Highly expressed in pancreas, ovary, brain, heart, skeletal muscle, colon, kidney, liver, stomach, spleen and placenta. [Isoform 3]: Also ubiquitous.

### Anti-CHSY2 Antibody - Protocols

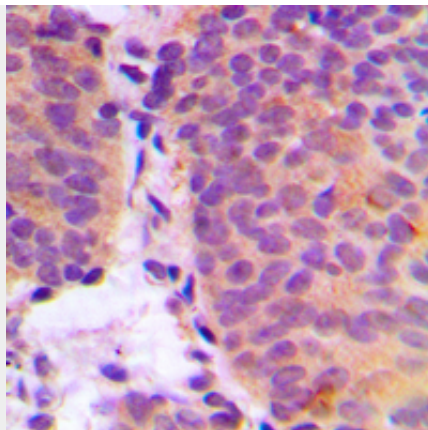
Provided below are standard protocols that you may find useful for product applications.

- [Western Blot](#)
- [Blocking Peptides](#)
- [Dot Blot](#)
- [Immunohistochemistry](#)
- [Immunofluorescence](#)
- [Immunoprecipitation](#)
- [Flow Cytometry](#)
- [Cell Culture](#)

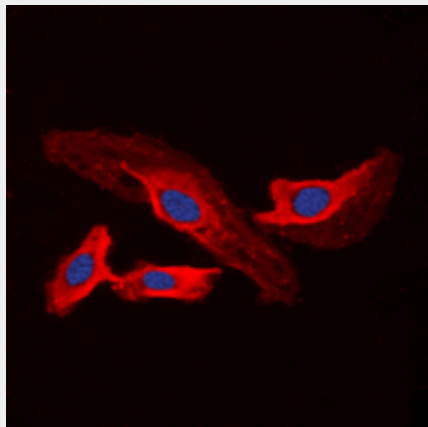
### Anti-CHSY2 Antibody - Images



Western blot analysis of CHSY2 expression in DLD (A) whole cell lysates.



Immunohistochemical analysis of CHSY2 staining in human breast cancer formalin fixed paraffin embedded tissue section. The section was pre-treated using heat mediated antigen retrieval with sodium citrate buffer (pH 6.0). The section was then incubated with the antibody at room temperature and detected using an HRP conjugated compact polymer system. DAB was used as the chromogen. The section was then counterstained with haematoxylin and mounted with DPX.



Immunofluorescent analysis of CHSY2 staining in A549 cells. Formalin-fixed cells were permeabilized with 0.1% Triton X-100 in TBS for 5-10 minutes and blocked with 3% BSA-PBS for 30 minutes at room temperature. Cells were probed with the primary antibody in 3% BSA-PBS and incubated overnight at 4 °C in a humidified chamber. Cells were washed with PBST and incubated with a DyLight 594-conjugated secondary antibody (red) in PBS at room temperature in the dark. DAPI was used to stain the cell nuclei (blue).

#### **Anti-CHSY2 Antibody - Background**

KLH-conjugated synthetic peptide encompassing a sequence within the C-term region of human CHSY2. The exact sequence is proprietary.