

Anti-BAIAP2L2 Antibody
Rabbit polyclonal antibody to BAIAP2L2
Catalog # AP60117

Specification

Anti-BAIAP2L2 Antibody - Product Information

Application	WB, IH
Primary Accession	Q6UXY1
Other Accession	Q80Y61
Reactivity	Human, Mouse, Rat, Bovine
Host	Rabbit
Clonality	Polyclonal
Calculated MW	58987

Anti-BAIAP2L2 Antibody - Additional Information

Gene ID 80115

Other Names

Brain-specific angiogenesis inhibitor 1-associated protein 2-like protein 2; BAI1-associated protein 2-like protein 2; Planar intestinal- and kidney-specific BAR domain protein; Pinkbar

Target/Specificity

Recognizes endogenous levels of BAIAP2L2 protein.

Dilution

WB~~WB (1/500 - 1/1000), IH (1/100 - 1/200)

IH~~WB (1/500 - 1/1000), IH (1/100 - 1/200)

Format

Liquid in 0.42% Potassium phosphate, 0.87% Sodium chloride, pH 7.3, 30% glycerol, and 0.09% (W/V) sodium azide.

Storage

Store at -20 °C. Stable for 12 months from date of receipt

Anti-BAIAP2L2 Antibody - Protein Information

Name BAIAP2L2

Function

Phosphoinositides-binding protein that induces the formation of planar or gently curved membrane structures. Binds to phosphoinositides, including to phosphatidylinositol 4,5-bisphosphate (PtdIns(4,5)P2) headgroups. There seems to be no clear preference for a specific phosphoinositide (By similarity).

Cellular Location

Cell membrane; Peripheral membrane protein. Cell junction. Cytoplasmic vesicle membrane.

Note=Localizes to RAB13-positive vesicles and to the plasma membrane at intercellular contacts

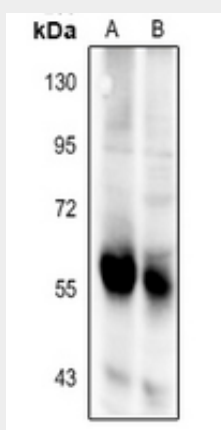
Tissue Location

Expressed in the epithelial layer of the intestine (at protein level).

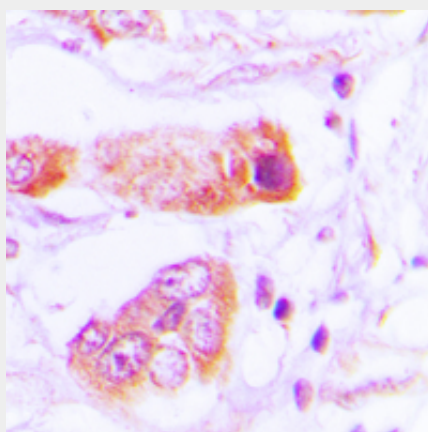
Anti-BAIAP2L2 Antibody - Protocols

Provided below are standard protocols that you may find useful for product applications.

- [Western Blot](#)
- [Blocking Peptides](#)
- [Dot Blot](#)
- [Immunohistochemistry](#)
- [Immunofluorescence](#)
- [Immunoprecipitation](#)
- [Flow Cytometry](#)
- [Cell Culture](#)

Anti-BAIAP2L2 Antibody - Images

Western blot analysis of BAIAP2L2 expression in C6 (A), CT26 (B) whole cell lysates.



Immunohistochemical analysis of BAIAP2L2 staining in human lung cancer formalin fixed paraffin embedded tissue section. The section was pre-treated using heat mediated antigen retrieval with sodium citrate buffer (pH 6.0). The section was then incubated with the antibody at room temperature and detected using an HRP conjugated compact polymer system. DAB was used as

the chromogen. The section was then counterstained with haematoxylin and mounted with DPX.

Anti-BAIAP2L2 Antibody - Background

KLH-conjugated synthetic peptide encompassing a sequence within the center region of human BAIAP2L2. The exact sequence is proprietary.