

Anti-ITPKC Antibody
Rabbit polyclonal antibody to ITPKC
Catalog # AP60118**Specification**

Anti-ITPKC Antibody - Product Information

Application	WB, IHC
Primary Accession	Q96DU7
Reactivity	Human
Host	Rabbit
Clonality	Polyclonal
Calculated MW	75207

Anti-ITPKC Antibody - Additional Information**Gene ID** 80271**Other Names**

IP3KC; Inositol-trisphosphate 3-kinase C; Inositol 1, 4, 5-trisphosphate 3-kinase C; IP3 3-kinase C; IP3K C; InsP 3-kinase C

Target/Specificity

Recognizes endogenous levels of ITPKC protein.

Dilution

WB~~WB (1/500 - 1/1000), IH (1/100 - 1/200)

IHC~~1:100~500

Format

Liquid in 0.42% Potassium phosphate, 0.87% Sodium chloride, pH 7.3, 30% glycerol, and 0.09% (W/V) sodium azide.

Storage

Store at -20 °C. Stable for 12 months from date of receipt

Anti-ITPKC Antibody - Protein Information**Name** ITPKC ([HGNC:14897](#))**Synonyms** IP3KC**Function**

Catalyzes the phosphorylation of 1D-myo-inositol 1,4,5- trisphosphate (InsP3) into 1D-myo-inositol 1,3,4,5-tetrakisphosphate and participates to the regulation of calcium homeostasis (PubMed:11085927, PubMed:12747803). Can phosphorylate inositol 2,4,5- triphosphate to inositol 2,4,5,6-tetraphosphate (By similarity).

Cellular Location

Nucleus. Cytoplasm. Note=Shuttles actively between nucleus and cytoplasm with both nuclear import and nuclear export activity {ECO:0000250|UniProtKB:Q80ZG2}

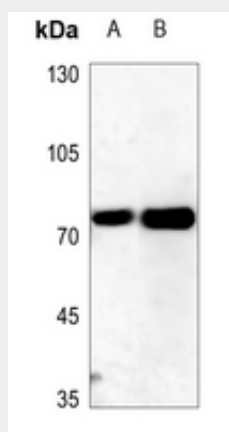
Tissue Location

Highly expressed in pancreas, skeletal muscle, liver, placenta and weakly in kidney and brain

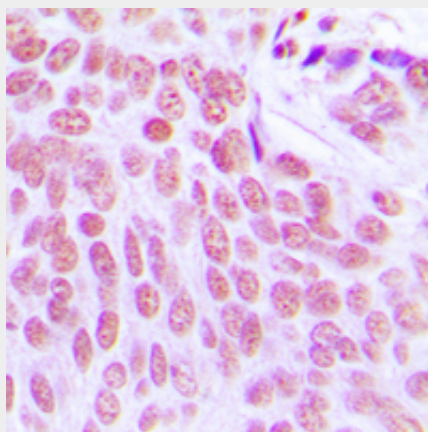
Anti-ITPKC Antibody - Protocols

Provided below are standard protocols that you may find useful for product applications.

- [Western Blot](#)
- [Blocking Peptides](#)
- [Dot Blot](#)
- [Immunohistochemistry](#)
- [Immunofluorescence](#)
- [Immunoprecipitation](#)
- [Flow Cytometry](#)
- [Cell Culture](#)

Anti-ITPKC Antibody - Images

Western blot analysis of ITPKC expression in A375 (A), DLD (B) whole cell lysates.



Immunohistochemical analysis of ITPKC staining in human breast cancer formalin fixed paraffin embedded tissue section. The section was pre-treated using heat mediated antigen retrieval with

sodium citrate buffer (pH 6.0). The section was then incubated with the antibody at room temperature and detected using an HRP conjugated compact polymer system. DAB was used as the chromogen. The section was then counterstained with haematoxylin and mounted with DPX.

Anti-ITPKC Antibody - Background

KLH-conjugated synthetic peptide encompassing a sequence within the center region of human ITPKC. The exact sequence is proprietary.