

**Anti-EEF2K (pS366) Antibody**  
**Rabbit polyclonal antibody to EEF2K (pS366)**  
**Catalog # AP60130**

**Specification**

---

**Anti-EEF2K (pS366) Antibody - Product Information**

Application	WB, IHC
Primary Accession	<a href="#">O00418</a>
Reactivity	Human, Rat, Monkey
Host	Rabbit
Clonality	Polyclonal
Calculated MW	82144

**Anti-EEF2K (pS366) Antibody - Additional Information**

**Gene ID** 29904

**Other Names**

Eukaryotic elongation factor 2 kinase; eEF-2 kinase; eEF-2K; Calcium/calmodulin-dependent eukaryotic elongation factor 2 kinase

**Target/Specificity**

KLH-conjugated synthetic peptide encompassing a sequence within the center region of human EEF2K (pS366). The exact sequence is proprietary.

**Dilution**

WB~~WB (1/500 - 1/1000), IH (1/100 - 1/200)  
IHC~~1:100~500

**Format**

Liquid in 0.42% Potassium phosphate, 0.87% Sodium chloride, pH 7.3, 30% glycerol, and 0.09% (W/V) sodium azide.

**Storage**

Store at -20 °C. Stable for 12 months from date of receipt

**Anti-EEF2K (pS366) Antibody - Protein Information**

**Name** EEF2K

**Function**

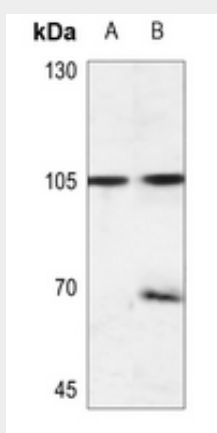
Threonine kinase that regulates protein synthesis by controlling the rate of peptide chain elongation. Upon activation by a variety of upstream kinases including AMPK or TRPM7, phosphorylates the elongation factor EEF2 at a single site, renders it unable to bind ribosomes and thus inactive. In turn, the rate of protein synthesis is reduced.

## Anti-EEF2K (pS366) Antibody - Protocols

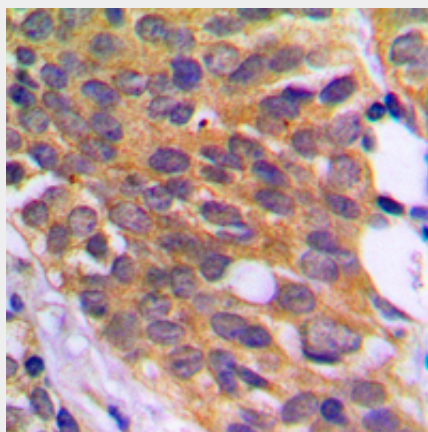
Provided below are standard protocols that you may find useful for product applications.

- [Western Blot](#)
- [Blocking Peptides](#)
- [Dot Blot](#)
- [Immunohistochemistry](#)
- [Immunofluorescence](#)
- [Immunoprecipitation](#)
- [Flow Cytometry](#)
- [Cell Culture](#)

## Anti-EEF2K (pS366) Antibody - Images



Western blot analysis of EEF2K (pS366) expression in DLD (A), rat muscle (B) whole cell lysates.



Immunohistochemical analysis of EEF2K (pS366) staining in human prostate cancer formalin fixed paraffin embedded tissue section. The section was pre-treated using heat mediated antigen retrieval with sodium citrate buffer (pH 6.0). The section was then incubated with the antibody at room temperature and detected using an HRP conjugated compact polymer system. DAB was used as the chromogen. The section was then counterstained with haematoxylin and mounted with DPX.

## Anti-EEF2K (pS366) Antibody - Background

KLH-conjugated synthetic peptide encompassing a sequence within the center region of human EEF2K (pS366). The exact sequence is proprietary.

**Anti-EEF2K (pS366) Antibody - Citations**

- [Favorable alleles mining for gelatinization temperature, gel consistency and amylose content in \*Oryza sativa\* by association mapping](#)