

Anti-STAT5 Antibody
Rabbit polyclonal antibody to STAT5
Catalog # AP60133**Specification**

Anti-STAT5 Antibody - Product Information

Application	WB, IHC
Primary Accession	P42229 , P51692
Other Accession	P42230 , P42232
Reactivity	Human, Mouse, Rat, Monkey, Pig, Chicken, Bovine, SARS
Host	Rabbit
Clonality	Polyclonal

Anti-STAT5 Antibody - Additional Information**Other Names**

STAT5A; STAT5; Signal transducer and activator of transcription 5A; STAT5B; Signal transducer and activator of transcription 5B

Target/Specificity

Recognizes endogenous levels of STAT5 protein.

Dilution

WB~~WB (1/500 - 1/1000), IH (1/100 - 1/200)
IHC~~1:100~500

Format

Liquid in 0.42% Potassium phosphate, 0.87% Sodium chloride, pH 7.3, 30% glycerol, and 0.09% (W/V) sodium azide.

Storage

Store at -20 °C. Stable for 12 months from date of receipt

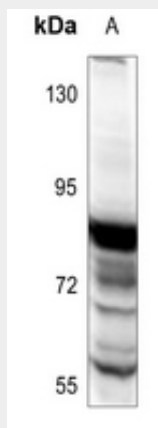
Anti-STAT5 Antibody - Protein Information**Anti-STAT5 Antibody - Protocols**

Provided below are standard protocols that you may find useful for product applications.

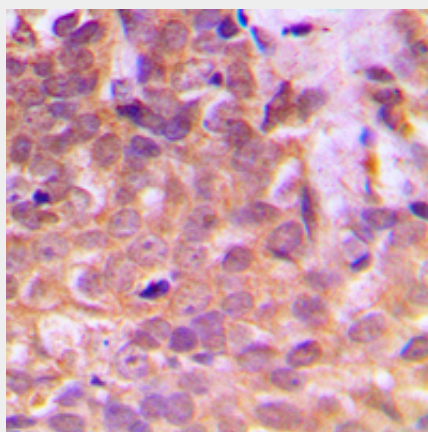
- [Western Blot](#)
- [Blocking Peptides](#)
- [Dot Blot](#)
- [Immunohistochemistry](#)
- [Immunofluorescence](#)
- [Immunoprecipitation](#)

- [Flow Cytometry](#)
- [Cell Culture](#)

Anti-STAT5 Antibody - Images



Western blot analysis of STAT5 expression in HeLa (A) whole cell lysates.



Immunohistochemical analysis of STAT5 staining in human breast cancer formalin fixed paraffin embedded tissue section. The section was pre-treated using heat mediated antigen retrieval with sodium citrate buffer (pH 6.0). The section was then incubated with the antibody at room temperature and detected using an HRP conjugated compact polymer system. DAB was used as the chromogen. The section was then counterstained with haematoxylin and mounted with DPX.

Anti-STAT5 Antibody - Background

KLH-conjugated synthetic peptide encompassing a sequence within the center region of human STAT5. The exact sequence is proprietary.