

Anti-hnRNP LL Antibody
Rabbit polyclonal antibody to hnRNP LL
Catalog # AP60136**Specification**

Anti-hnRNP LL Antibody - Product Information

Application	WB, IHC
Primary Accession	Q8WVV9
Other Accession	Q921F4
Reactivity	Human, Mouse, Bovine
Host	Rabbit
Clonality	Polyclonal
Calculated MW	60083

Anti-hnRNP LL Antibody - Additional Information**Gene ID** 92906**Other Names**

SRRF; Heterogeneous nuclear ribonucleoprotein L-like; hnRNPLL; Stromal RNA-regulating factor

Target/Specificity

KLH-conjugated synthetic peptide encompassing a sequence within the center region of human hnRNP LL. The exact sequence is proprietary.

Dilution

WB~~WB (1/500 - 1/1000), IH (1/100 - 1/200)

IHC~~1:100~500

Format

Liquid in 0.42% Potassium phosphate, 0.87% Sodium chloride, pH 7.3, 30% glycerol, and 0.09% (W/V) sodium azide.

Storage

Store at -20 °C. Stable for 12 months from date of receipt

Anti-hnRNP LL Antibody - Protein Information**Name** HNRNPLL**Synonyms** HNRPLL, SRRF**Function**

RNA-binding protein that functions as a regulator of alternative splicing for multiple target mRNAs, including PTPRC/CD45 and STAT5A. Required for alternative splicing of PTPRC.

Tissue Location

Widely expressed. Detected in bone marrow stroma cells, skeletal muscle, heart, placenta,

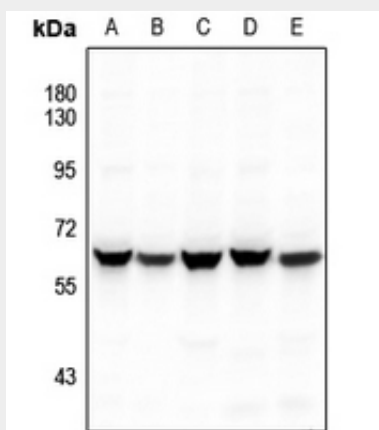
pancreas, kidney and lung

Anti-hnRNP LL Antibody - Protocols

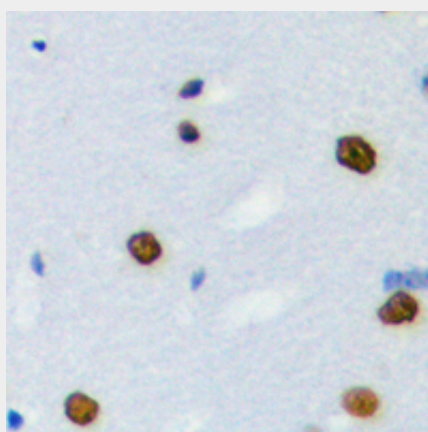
Provided below are standard protocols that you may find useful for product applications.

- [Western Blot](#)
- [Blocking Peptides](#)
- [Dot Blot](#)
- [Immunohistochemistry](#)
- [Immunofluorescence](#)
- [Immunoprecipitation](#)
- [Flow Cytometry](#)
- [Cell Culture](#)

Anti-hnRNP LL Antibody - Images



Western blot analysis of hnRNP LL expression in HCT116 (A), HepG2 (B), MCF7 (C), A549 (D), H1792 (E) whole cell lysates.



Immunohistochemical analysis of hnRNP LL staining in human brain formalin fixed paraffin embedded tissue section. The section was pre-treated using heat mediated antigen retrieval with sodium citrate buffer (pH 6.0). The section was then incubated with the antibody at room temperature and detected using an HRP conjugated compact polymer system. DAB was used as the chromogen. The section was then counterstained with haematoxylin and mounted with DPX.

Anti-hnRNP LL Antibody - Background

KLH-conjugated synthetic peptide encompassing a sequence within the center region of human hnRNP LL. The exact sequence is proprietary.