

**Anti-Factor B Antibody**  
Rabbit polyclonal antibody to Factor B  
Catalog # AP60137

## Specification

## Anti-Factor B Antibody - Product Information

Application	WB
Primary Accession	<a href="#">P00751</a>
Other Accession	<a href="#">P04186</a>
Reactivity	Human, Mouse, Rat, Bovine
Host	Rabbit
Clonality	Polyclonal
Calculated MW	85533

### Anti-Factor B Antibody - Additional Information

**Gene ID 629**

## Other Names

BF; BFD; Complement factor B; C3/C5 convertase; Glycine-rich beta glycoprotein; GBG; PBF2; Properdin factor B

## Target/Specificity

Recognizes endogenous levels of Factor B protein.

## Dilution

WB~WB (1/500 - 1/1000)

## Format

Liquid in 0.42% Potassium phosphate, 0.87% Sodium chloride, pH 7.3, 30% glycerol, and 0.09% (W/V) sodium azide.

## Storage

Store at -20 °C.Stable for 12 months from date of receipt

## Anti-Factor B Antibody - Protein Information

**Name** CFB ([HGNC:1037](#))

**Synonyms** BF, BFD

## Function

Precursor of the catalytic component of the C3 and C5 convertase complexes of the alternative pathway of the complement system, a cascade of proteins that leads to phagocytosis and breakdown of pathogens and signaling that strengthens the adaptive immune system (PubMed:<a href="http://www.uniprot.org/citations/3638964" target="\_blank">3638964</a>, PubMed:<a href="http://www.uniprot.org/citations/624565" target="\_blank">624565</a>, PubMed:<a href="http://www.uniprot.org/citations/6554279" target=" blank">6554279</a>, PubMed:<a

href="http://www.uniprot.org/citations/6919543" target="\_blank">6919543</a>, PubMed:<a href="http://www.uniprot.org/citations/9748277" target="\_blank">9748277</a>). The alternative complement pathway acts as an amplification loop that enhances other complement pathways (classical, lectin and GZMK) by promoting formation of additional C3 and C5 convertases (PubMed:<a href="http://www.uniprot.org/citations/3638964" target="\_blank">3638964</a>, PubMed:<a href="http://www.uniprot.org/citations/624565" target="\_blank">624565</a>, PubMed:<a href="http://www.uniprot.org/citations/6554279" target="\_blank">6554279</a>, PubMed:<a href="http://www.uniprot.org/citations/6919543" target="\_blank">6919543</a>, PubMed:<a href="http://www.uniprot.org/citations/9748277" target="\_blank">9748277</a>). CFB is cleaved and activated by CFD to generate Ba and Bb chains; Bb chain constituting the catalytic component of the C3 and C5 convertases (PubMed:<a href="http://www.uniprot.org/citations/6769474" target="\_blank">6769474</a>, PubMed:<a href="http://www.uniprot.org/citations/9748277" target="\_blank">9748277</a>).

### Cellular Location

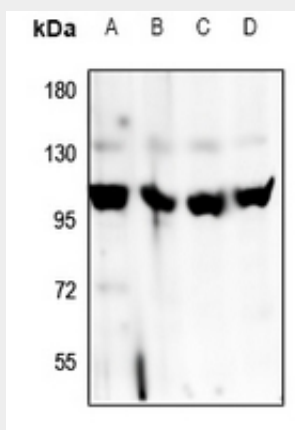
Secreted.

### Anti-Factor B Antibody - Protocols

Provided below are standard protocols that you may find useful for product applications.

- [Western Blot](#)
- [Blocking Peptides](#)
- [Dot Blot](#)
- [Immunohistochemistry](#)
- [Immunofluorescence](#)
- [Immunoprecipitation](#)
- [Flow Cytometry](#)
- [Cell Culture](#)

### Anti-Factor B Antibody - Images



Western blot analysis of Factor B expression in A549 (A), HepG2 (B), PC12 (C), CT26 (D) whole cell lysates.

### Anti-Factor B Antibody - Background

KLH-conjugated synthetic peptide encompassing a sequence within the center region of human Factor B. The exact sequence is proprietary.