

Anti-Cathepsin A 20k Antibody
Rabbit polyclonal antibody to Cathepsin A 20k
Catalog # AP60146**Specification**

Anti-Cathepsin A 20k Antibody - Product Information

Application	WB
Primary Accession	P10619
Other Accession	P16675
Reactivity	Human, Mouse, Rat, Rabbit, Monkey, Dog
Host	Rabbit
Clonality	Polyclonal
Calculated MW	54466

Anti-Cathepsin A 20k Antibody - Additional Information**Gene ID** 5476**Other Names**

PPGB; Lysosomal protective protein; Carboxypeptidase C; Carboxypeptidase L; Cathepsin A; Protective protein cathepsin A; PPCA; Protective protein for beta-galactosidase

Target/Specificity

Recognizes endogenous levels of Cathepsin A 20k protein.

Dilution

WB~~WB (1/500 - 1/1000)

Format

Liquid in 0.42% Potassium phosphate, 0.87% Sodium chloride, pH 7.3, 30% glycerol, and 0.09% (W/V) sodium azide.

Storage

Store at -20 °C. Stable for 12 months from date of receipt

Anti-Cathepsin A 20k Antibody - Protein Information**Name** CTSA**Synonyms** PPGB**Function**

Protective protein appears to be essential for both the activity of beta-galactosidase and neuraminidase, it associates with these enzymes and exerts a protective function necessary for their stability and activity. This protein is also a carboxypeptidase and can deamidate tachykinins.

Cellular Location

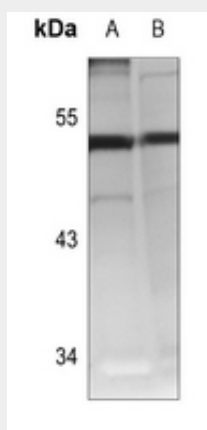
Lysosome.

Anti-Cathepsin A 20k Antibody - Protocols

Provided below are standard protocols that you may find useful for product applications.

- [Western Blot](#)
- [Blocking Peptides](#)
- [Dot Blot](#)
- [Immunohistochemistry](#)
- [Immunofluorescence](#)
- [Immunoprecipitation](#)
- [Flow Cytometry](#)
- [Cell Culture](#)

Anti-Cathepsin A 20k Antibody - Images



Western blot analysis of Cathepsin A 20k expression in rat liver (A), mouse kidney (B) whole cell lysates.

Anti-Cathepsin A 20k Antibody - Background

KLH-conjugated synthetic peptide encompassing a sequence within the center region of human Cathepsin A 20k. The exact sequence is proprietary.