

Anti-Cathepsin F Antibody
Rabbit polyclonal antibody to Cathepsin F
Catalog # AP60148**Specification**

Anti-Cathepsin F Antibody - Product Information

Application	WB
Primary Accession	Q9UBX1
Other Accession	Q9R013
Reactivity	Human, Mouse, Rat, Monkey
Host	Rabbit
Clonality	Polyclonal
Calculated MW	53366

Anti-Cathepsin F Antibody - Additional Information**Gene ID** 8722**Other Names**

Cathepsin F; CATSF

Target/Specificity

Recognizes endogenous levels of Cathepsin F protein.

Dilution

WB~~WB (1/500 - 1/1000)

Format

Liquid in 0.42% Potassium phosphate, 0.87% Sodium chloride, pH 7.3, 30% glycerol, and 0.09% (W/V) sodium azide.

Storage

Store at -20 °C. Stable for 12 months from date of receipt

Anti-Cathepsin F Antibody - Protein Information**Name** CTSF**Function**

Thiol protease which is believed to participate in intracellular degradation and turnover of proteins. Has also been implicated in tumor invasion and metastasis.

Cellular Location

Lysosome.

Tissue Location

High expression levels in heart, skeletal muscle, brain, testis and ovary; moderate levels in prostate, placenta, liver and colon; and no detectable expression in peripheral leukocytes and

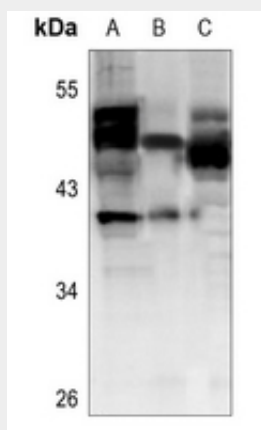
thymus

Anti-Cathepsin F Antibody - Protocols

Provided below are standard protocols that you may find useful for product applications.

- [Western Blot](#)
- [Blocking Peptides](#)
- [Dot Blot](#)
- [Immunohistochemistry](#)
- [Immunofluorescence](#)
- [Immunoprecipitation](#)
- [Flow Cytometry](#)
- [Cell Culture](#)

Anti-Cathepsin F Antibody - Images



Western blot analysis of Cathepsin F expression in U87MG (A), SKOVCA3 (B), AML12 (C) whole cell lysates.

Anti-Cathepsin F Antibody - Background

KLH-conjugated synthetic peptide encompassing a sequence within the center region of human Cathepsin F. The exact sequence is proprietary.