

Anti-CATSPER1 Antibody
Rabbit polyclonal antibody to CATSPER1
Catalog # AP60149**Specification**

Anti-CATSPER1 Antibody - Product Information

| | |
|-------------------|---------------------------|
| Application | WB |
| Primary Accession | Q8NEC5 |
| Other Accession | Q91ZR5 |
| Reactivity | Human, Mouse, Rat, Monkey |
| Host | Rabbit |
| Clonality | Polyclonal |
| Calculated MW | 90091 |

Anti-CATSPER1 Antibody - Additional Information**Gene ID** 117144**Other Names**

Cation channel sperm-associated protein 1; CatSper1; hCatSper

Target/Specificity

Recognizes endogenous levels of CATSPER1 protein.

Dilution

WB~~WB (1/500 - 1/1000)

Format

Liquid in 0.42% Potassium phosphate, 0.87% Sodium chloride, pH 7.3, 30% glycerol, and 0.09% (W/V) sodium azide.

Storage

Store at -20 °C. Stable for 12 months from date of receipt

Anti-CATSPER1 Antibody - Protein Information**Name** CATSPER1**Function**

Pore-forming subunit of the CatSper complex, a sperm-specific voltage-gated calcium channel that plays a central role in calcium- dependent physiological responses essential for successful fertilization, such as sperm hyperactivation, acrosome reaction and chemotaxis towards the oocyte.

Cellular Location

Cell projection, cilium, flagellum membrane; Multi-pass membrane protein {ECO:0000250|UniProtKB:Q91ZR5}. Note=Specifically located in the principal piece of the sperm tail.

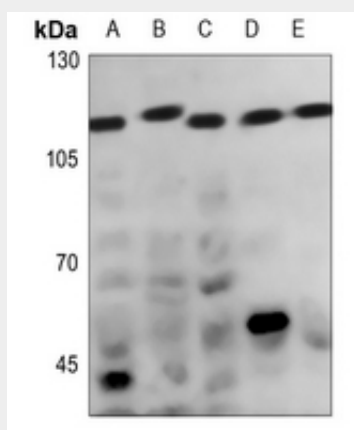
Tissue Location

Testis-specific.

Anti-CATSPER1 Antibody - Protocols

Provided below are standard protocols that you may find useful for product applications.

- [Western Blot](#)
- [Blocking Peptides](#)
- [Dot Blot](#)
- [Immunohistochemistry](#)
- [Immunofluorescence](#)
- [Immunoprecipitation](#)
- [Flow Cytometry](#)
- [Cell Culture](#)

Anti-CATSPER1 Antibody - Images

Western blot analysis of CATSPER1 expression in Hela (A), DLD (B), A375 (C), mouse testis (D), rat testis (E) whole cell lysates.

Anti-CATSPER1 Antibody - Background

KLH-conjugated synthetic peptide encompassing a sequence within the center region of human CATSPER1. The exact sequence is proprietary.