

Anti-CD41 HC Antibody
Rabbit polyclonal antibody to CD41 HC
Catalog # AP60154**Specification**

Anti-CD41 HC Antibody - Product Information

| | |
|-------------------|------------------------|
| Application | WB |
| Primary Accession | P08514 |
| Other Accession | Q9OUM0 |
| Reactivity | Human, Mouse, Rat |
| Host | Rabbit |
| Clonality | Polyclonal |
| Calculated MW | 113377 |

Anti-CD41 HC Antibody - Additional Information**Gene ID** 3674**Other Names**

GP2B; ITGAB; Integrin alpha-IIb; GPalpha IIb; GPIIb; Platelet membrane glycoprotein IIb; CD41

Target/Specificity

Recognizes endogenous levels of CD41 HC protein.

Dilution

WB~~WB (1/500 - 1/1000)

Format

Liquid in 0.42% Potassium phosphate, 0.87% Sodium chloride, pH 7.3, 30% glycerol, and 0.09% (W/V) sodium azide.

Storage

Store at -20 °C. Stable for 12 months from date of receipt

Anti-CD41 HC Antibody - Protein Information**Name** ITGA2B**Synonyms** GP2B, ITGAB**Function**

Integrin alpha-IIb/beta-3 is a receptor for fibronectin, fibrinogen, plasminogen, prothrombin, thrombospondin and vitronectin. It recognizes the sequence R-G-D in a wide array of ligands. It recognizes the sequence H-H-L-G-G-G-A-K-Q-A-G-D-V in fibrinogen gamma chain (By similarity). Following activation integrin alpha-IIb/beta-3 brings about platelet/platelet interaction through binding of soluble fibrinogen (PubMed:9111081). This step leads to rapid platelet aggregation which physically plugs ruptured endothelial cell surface (By similarity).

Cellular Location

Membrane; Single-pass type I membrane protein.

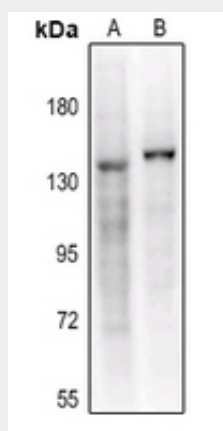
Tissue Location

Isoform 1 and isoform 2 are expressed in platelets and megakaryocytes, but not in reticulocytes. Not detected in Jurkat, nor in U937 cell lines (PubMed:2351656). Isoform 3 is expressed in prostate adenocarcinoma, as well as in several erythroleukemia, prostate adenocarcinoma and melanoma cell lines, including PC-3, DU-145, HEL, WM983A, WM983B and WM35. Not detected in platelets, nor in normal prostate (at protein level) (PubMed:9809974)

Anti-CD41 HC Antibody - Protocols

Provided below are standard protocols that you may find useful for product applications.

- [Western Blot](#)
- [Blocking Peptides](#)
- [Dot Blot](#)
- [Immunohistochemistry](#)
- [Immunofluorescence](#)
- [Immunoprecipitation](#)
- [Flow Cytometry](#)
- [Cell Culture](#)

Anti-CD41 HC Antibody - Images

Western blot analysis of CD41 HC expression in K562 (A), mouse testis (B) whole cell lysates.

Anti-CD41 HC Antibody - Background

KLH-conjugated synthetic peptide encompassing a sequence within the N-term region of human CD41 HC. The exact sequence is proprietary.