

Anti-Collagen 1 alpha 1 Antibody
Rabbit polyclonal antibody to Collagen 1 alpha 1
Catalog # AP60156**Specification**

Anti-Collagen 1 alpha 1 Antibody - Product Information

Application	WB, IH
Primary Accession	P02452
Other Accession	P11087
Reactivity	Human, Mouse, Rat, Rabbit, Bovine, Drosophila
Host	Rabbit
Clonality	Polyclonal
Calculated MW	138911

Anti-Collagen 1 alpha 1 Antibody - Additional Information**Gene ID** 1277**Other Names**

Collagen alpha-1(I) chain; Alpha-1 type I collagen

Target/Specificity

Recognizes endogenous levels of Collagen 1 alpha 1 protein.

Dilution

WB~~WB (1/500 - 1/1000), IH (1/50 - 1/100)

IH~~WB (1/500 - 1/1000), IH (1/50 - 1/100)

Format

Liquid in 0.42% Potassium phosphate, 0.87% Sodium chloride, pH 7.3, 30% glycerol, and 0.09% (W/V) sodium azide.

Storage

Store at -20 °C.Stable for 12 months from date of receipt

Anti-Collagen 1 alpha 1 Antibody - Protein Information**Name** COL1A1**Function**

Type I collagen is a member of group I collagen (fibrillar forming collagen).

Cellular Location

Secreted, extracellular space, extracellular matrix {ECO:0000255|PROSITE-ProRule:PRU00793}

Tissue Location

Forms the fibrils of tendon, ligaments and bones. In bones the fibrils are mineralized with calcium

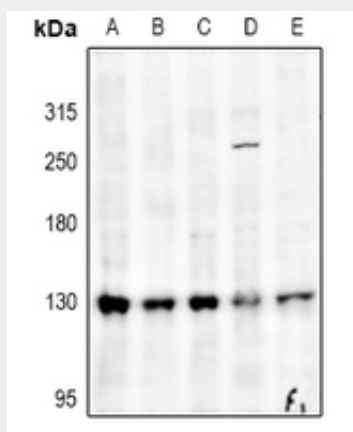
hydroxyapatite

Anti-Collagen 1 alpha 1 Antibody - Protocols

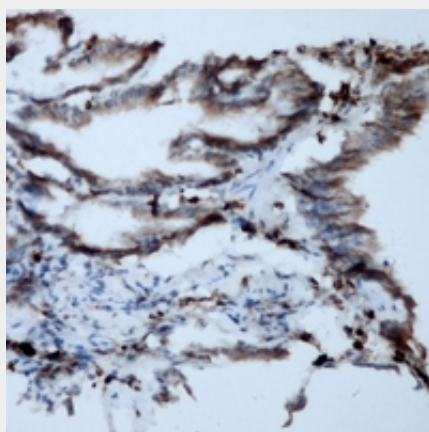
Provided below are standard protocols that you may find useful for product applications.

- [Western Blot](#)
- [Blocking Peptides](#)
- [Dot Blot](#)
- [Immunohistochemistry](#)
- [Immunofluorescence](#)
- [Immunoprecipitation](#)
- [Flow Cytometry](#)
- [Cell Culture](#)

Anti-Collagen 1 alpha 1 Antibody - Images



Western blot analysis of Collagen 1 alpha 1 expression in EC9706 (A), A375 (B), SGC7901 (C), Hela (D), HEK293T (E) whole cell lysates.



Immunohistochemical analysis of Collagen 1 alpha 1 staining in human lung formalin fixed paraffin embedded tissue section. The section was pre-treated using heat mediated antigen retrieval with sodium citrate buffer (pH 6.0). The section was then incubated with the antibody at room temperature and detected using an HRP conjugated compact polymer system. DAB was used as the chromogen. The section was then counterstained with haematoxylin and mounted with DPX.

Anti-Collagen 1 alpha 1 Antibody - Background

KLH-conjugated synthetic peptide encompassing a sequence within the C-term region of human Collagen 1 alpha 1. The exact sequence is proprietary.