

**Anti-EB2 Antibody**  
**Rabbit polyclonal antibody to EB2**  
**Catalog # AP60160****Specification**

---

**Anti-EB2 Antibody - Product Information**

Application	WB
Primary Accession	<a href="#">Q15555</a>
Other Accession	<a href="#">Q8R001</a>
Reactivity	Human, Mouse, Rat, Monkey, Chicken, Bovine
Host	Rabbit
Clonality	Polyclonal
Calculated MW	37031

**Anti-EB2 Antibody - Additional Information****Gene ID** 10982**Other Names**

RP1; Microtubule-associated protein RP/EB family member 2; APC-binding protein EB2; End-binding protein 2; EB2

**Target/Specificity**

Recognizes endogenous levels of EB2 protein.

**Dilution**

WB~~WB (1/500 - 1/1000)

**Format**

Liquid in 0.42% Potassium phosphate, 0.87% Sodium chloride, pH 7.3, 30% glycerol, and 0.09% (W/V) sodium azide.

**Storage**

Store at -20 °C.Stable for 12 months from date of receipt

**Anti-EB2 Antibody - Protein Information****Name** MAPRE2**Synonyms** RP1**Function**

Adapter protein that is involved in microtubule polymerization, and spindle function by stabilizing microtubules and anchoring them at centrosomes. Therefore, ensures mitotic progression and genome stability (PubMed:<a href="http://www.uniprot.org/citations/27030108" target="\_blank">27030108</a>). Acts as a central regulator of microtubule reorganization in apico-basal epithelial differentiation (By similarity). Plays a role during oocyte meiosis by

regulating microtubule dynamics (By similarity). Participates in neurite growth by interacting with plexin B3/PLXNB3 and microtubule reorganization during apico-basal epithelial differentiation (PubMed:<a href="http://www.uniprot.org/citations/22373814" target="\_blank">22373814</a>). Also plays an essential role for cell migration and focal adhesion dynamics. Mechanistically, recruits HAX1 to microtubules in order to regulate focal adhesion dynamics (PubMed:<a href="http://www.uniprot.org/citations/26527684" target="\_blank">26527684</a>).

#### **Cellular Location**

Cytoplasm, cytoskeleton. Note=Associated with the microtubule network. Accumulates at the plus end of microtubules

#### **Tissue Location**

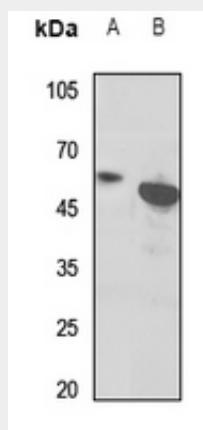
Expressed in different tumor cell lines. Up- regulated in activated B- and T-lymphocytes

### **Anti-EB2 Antibody - Protocols**

Provided below are standard protocols that you may find useful for product applications.

- [Western Blot](#)
- [Blocking Peptides](#)
- [Dot Blot](#)
- [Immunohistochemistry](#)
- [Immunofluorescence](#)
- [Immunoprecipitation](#)
- [Flow Cytometry](#)
- [Cell Culture](#)

### **Anti-EB2 Antibody - Images**



Western blot analysis of EB2 expression in mouse heart (A), rat heart (B) whole cell lysates.

### **Anti-EB2 Antibody - Background**

KLH-conjugated synthetic peptide encompassing a sequence within the center region of human EB2. The exact sequence is proprietary.