

Anti-Enterokinase LC Antibody
Rabbit polyclonal antibody to Enterokinase LC
Catalog # AP60164

Specification

Anti-Enterokinase LC Antibody - Product Information

Application	WB
Primary Accession	P98073
Other Accession	P97435
Reactivity	Human, Mouse, Rat
Host	Rabbit
Clonality	Polyclonal
Calculated MW	112935

Anti-Enterokinase LC Antibody - Additional Information

Gene ID 5651

Other Names

ENTK; PRSS7; Enteropeptidase; Enterokinase; Serine protease 7; Transmembrane protease serine 15

Target/Specificity

Recognizes endogenous levels of Enterokinase LC protein.

Dilution

WB~~WB (1/500 - 1/1000)

Format

Liquid in 0.42% Potassium phosphate, 0.87% Sodium chloride, pH 7.3, 30% glycerol, and 0.09% (W/V) sodium azide.

Storage

Store at -20 °C. Stable for 12 months from date of receipt

Anti-Enterokinase LC Antibody - Protein Information

Name Tmprss15

Synonyms ENTK, PRSS7

Function

Responsible for initiating activation of pancreatic proteolytic proenzymes (trypsin, chymotrypsin and carboxypeptidase A). It catalyzes the conversion of trypsinogen to trypsin which in turn activates other proenzymes including chymotrypsinogen, procarboxypeptidases, and proelastases.

Cellular Location

Membrane; Single-pass type II membrane protein

Tissue Location

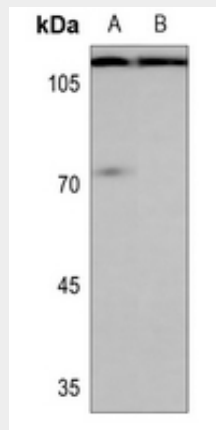
Intestinal brush border.

Anti-Enterokinase LC Antibody - Protocols

Provided below are standard protocols that you may find useful for product applications.

- [Western Blot](#)
- [Blocking Peptides](#)
- [Dot Blot](#)
- [Immunohistochemistry](#)
- [Immunofluorescence](#)
- [Immunoprecipitation](#)
- [Flow Cytometry](#)
- [Cell Culture](#)

Anti-Enterokinase LC Antibody - Images



Western blot analysis of Enterokinase LC expression in mouse testis (A), rat testis (B) whole cell lysates.

Anti-Enterokinase LC Antibody - Background

KLH-conjugated synthetic peptide encompassing a sequence within the C-term region of human Enterokinase LC. The exact sequence is proprietary.