

**Anti-IDH3 beta Antibody**  
**Rabbit polyclonal antibody to IDH3 beta**  
**Catalog # AP60181****Specification**

---

**Anti-IDH3 beta Antibody - Product Information**

Application	WB
Primary Accession	<a href="#">O43837</a>
Reactivity	Human, Mouse, Rat, Monkey, Pig, Bovine
Host	Rabbit
Clonality	Polyclonal
Calculated MW	42184

**Anti-IDH3 beta Antibody - Additional Information****Gene ID** 3420**Other Names**

Isocitrate dehydrogenase [NAD] subunit beta mitochondrial; Isocitric dehydrogenase subunit beta; NAD(+)-specific ICDH subunit beta

**Target/Specificity**

KLH-conjugated synthetic peptide encompassing a sequence within the center region of human IDH3 beta. The exact sequence is proprietary.

**Dilution**

WB~~WB (1/500 - 1/1000)

**Format**

Liquid in 0.42% Potassium phosphate, 0.87% Sodium chloride, pH 7.3, 30% glycerol, and 0.09% (W/V) sodium azide.

**Storage**

Store at -20 °C. Stable for 12 months from date of receipt

**Anti-IDH3 beta Antibody - Protein Information****Name** IDH3B**Function**

Plays a structural role to facilitate the assembly and ensure the full activity of the enzyme catalyzing the decarboxylation of isocitrate (ICT) into alpha-ketoglutarate. The heterodimer composed of the alpha (IDH3A) and beta (IDH3B) subunits and the heterodimer composed of the alpha (IDH3A) and gamma (IDH3G) subunits, have considerable basal activity but the full activity of the heterotetramer (containing two subunits of IDH3A, one of IDH3B and one of IDH3G) requires the assembly and cooperative function of both heterodimers.

**Cellular Location**

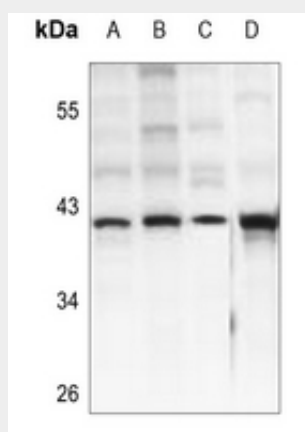
Mitochondrion.

### Anti-IDH3 beta Antibody - Protocols

Provided below are standard protocols that you may find useful for product applications.

- [Western Blot](#)
- [Blocking Peptides](#)
- [Dot Blot](#)
- [Immunohistochemistry](#)
- [Immunofluorescence](#)
- [Immunoprecipitation](#)
- [Flow Cytometry](#)
- [Cell Culture](#)

### Anti-IDH3 beta Antibody - Images



Western blot analysis of IDH3 beta expression in U87MG (A), HEK293T (B), EC9706 (C), mouse brain (D) whole cell lysates.

### Anti-IDH3 beta Antibody - Background

KLH-conjugated synthetic peptide encompassing a sequence within the center region of human IDH3 beta. The exact sequence is proprietary.