

**Anti-Kallikrein 7 Antibody**  
**Rabbit polyclonal antibody to Kallikrein 7**  
**Catalog # AP60186****Specification**

---

**Anti-Kallikrein 7 Antibody - Product Information**

Application	WB
Primary Accession	<a href="#">P49862</a>
Other Accession	<a href="#">Q91VE3</a>
Reactivity	Human, Mouse, Rat
Host	Rabbit
Clonality	Polyclonal
Calculated MW	27525

**Anti-Kallikrein 7 Antibody - Additional Information****Gene ID** 5650**Other Names**

PRSS6; SCCE; Kallikrein-7; hK7; Serine protease 6; Stratum corneum chymotryptic enzyme; hSCCE

**Target/Specificity**

Recognizes endogenous levels of Kallikrein 7 protein.

**Dilution**

WB~~WB (1/500 - 1/1000)

**Format**

Liquid in 0.42% Potassium phosphate, 0.87% Sodium chloride, pH 7.3, 30% glycerol, and 0.09% (W/V) sodium azide.

**Storage**

Store at -20 °C. Stable for 12 months from date of receipt

**Anti-Kallikrein 7 Antibody - Protein Information****Name** KLK7**Synonyms** PRSS6, SCCE**Function**

May catalyze the degradation of intercellular cohesive structures in the cornified layer of the skin in the continuous shedding of cells from the skin surface. Specific for amino acid residues with aromatic side chains in the P1 position. Cleaves insulin A chain at '14-Tyr-|-Gln-15' and insulin B chain at '6-Leu-|-Cys-7', '16-Tyr-|-Leu-17', '25-Phe-|-Tyr-26' and '26-Tyr-|-Thr-27'. Could play a role in the activation of precursors to inflammatory cytokines.

**Cellular Location**

Secreted. Note=In ovarian carcinoma, secreted and also observed at the apical membrane and in cytoplasm at the invasive front

#### **Tissue Location**

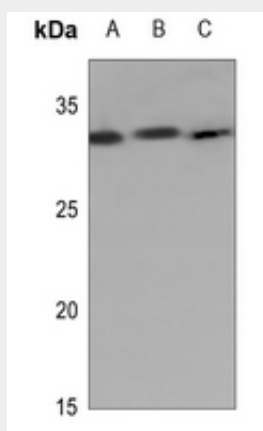
Abundantly expressed in the skin and is expressed by keratinocytes in the epidermis. Also expressed in the brain, mammary gland, cerebellum, spinal cord and kidney. Lower levels in salivary glands, uterus, thymus, thyroid, placenta, trachea and testis. Up-regulated in ovarian carcinoma, especially late-stage serous carcinoma, compared with normal ovaries and benign adenomas (at protein level)

#### **Anti-Kallikrein 7 Antibody - Protocols**

Provided below are standard protocols that you may find useful for product applications.

- [Western Blot](#)
- [Blocking Peptides](#)
- [Dot Blot](#)
- [Immunohistochemistry](#)
- [Immunofluorescence](#)
- [Immunoprecipitation](#)
- [Flow Cytometry](#)
- [Cell Culture](#)

#### **Anti-Kallikrein 7 Antibody - Images**



Western blot analysis of Kallikrein 7 expression in HEK293T (A), A549 (B), MCF7 (C) whole cell lysates.

#### **Anti-Kallikrein 7 Antibody - Background**

KLH-conjugated synthetic peptide encompassing a sequence within the N-term region of human Kallikrein 7. The exact sequence is proprietary.