

**Anti-MASP1 LC Antibody**  
**Rabbit polyclonal antibody to MASP1 LC**  
**Catalog # AP60188****Specification**

---

**Anti-MASP1 LC Antibody - Product Information**

Application	WB
Primary Accession	<a href="#">P48740</a>
Other Accession	<a href="#">P98064</a>
Reactivity	Human, Mouse, Rat
Host	Rabbit
Clonality	Polyclonal
Calculated MW	79247

**Anti-MASP1 LC Antibody - Additional Information****Gene ID** 5648**Other Names**

CRARF; CRARF1; PRSS5; Mannan-binding lectin serine protease 1; Complement factor MASP-3; Complement-activating component of Ra-reactive factor; Mannose-binding lectin-associated serine protease 1; MASP-1; Mannose-binding protein-associated serine protease; Ra-reactive factor serine protease p100; RaRF; Serine protease 5

**Target/Specificity**

Recognizes endogenous levels of MASP1 LC protein.

**Dilution**

WB~~WB (1/500 - 1/1000)

**Format**

Liquid in 0.42% Potassium phosphate, 0.87% Sodium chloride, pH 7.3, 30% glycerol, and 0.09% (W/V) sodium azide.

**Storage**

Store at -20 °C. Stable for 12 months from date of receipt

**Anti-MASP1 LC Antibody - Protein Information****Name** MASP1**Synonyms** CRARF, CRARF1, PRSS5**Function**

Functions in the lectin pathway of complement, which performs a key role in innate immunity by recognizing pathogens through patterns of sugar moieties and neutralizing them. The lectin pathway is triggered upon binding of mannan-binding lectin (MBL) and ficolins to sugar moieties which leads to activation of the associated proteases MASP1 and MASP2. Functions as an

endopeptidase and may activate MASP2 or C2 or directly activate C3 the key component of complement reaction. Isoform 2 may have an inhibitory effect on the activation of the lectin pathway of complement or may cleave IGFBP5. Also plays a role in development (PubMed:<a href="http://www.uniprot.org/citations/21258343" target="\_blank">21258343</a>).

**Cellular Location**

Secreted.

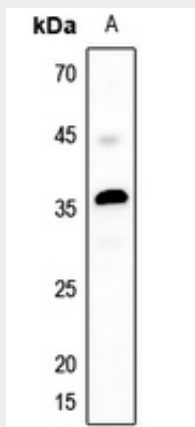
**Tissue Location**

Protein of the plasma which is primarily expressed by liver.

**Anti-MASP1 LC Antibody - Protocols**

Provided below are standard protocols that you may find useful for product applications.

- [Western Blot](#)
- [Blocking Peptides](#)
- [Dot Blot](#)
- [Immunohistochemistry](#)
- [Immunofluorescence](#)
- [Immunoprecipitation](#)
- [Flow Cytometry](#)
- [Cell Culture](#)

**Anti-MASP1 LC Antibody - Images**

Western blot analysis of MASP1 LC expression in Hela (A) whole cell lysates.

**Anti-MASP1 LC Antibody - Background**

KLH-conjugated synthetic peptide encompassing a sequence within the center region of human MASP1 LC. The exact sequence is proprietary.