

Anti-MMP26 Antibody
Rabbit polyclonal antibody to MMP26
Catalog # AP60192**Specification**

Anti-MMP26 Antibody - Product Information

Application	WB
Primary Accession	Q9NRE1
Reactivity	Human, Mouse, Rat, Monkey
Host	Rabbit
Clonality	Polyclonal
Calculated MW	29708

Anti-MMP26 Antibody - Additional Information**Gene ID** 56547**Other Names**

Matrix metalloproteinase-26; MMP-26; Endometase; Matrilysin-2

Target/Specificity

Recognizes endogenous levels of MMP26 protein.

Dilution

WB~~WB (1/500 - 1/1000)

Format

Liquid in 0.42% Potassium phosphate, 0.87% Sodium chloride, pH 7.3, 30% glycerol, and 0.09% (W/V) sodium azide.

Storage

Store at -20 °C. Stable for 12 months from date of receipt

Anti-MMP26 Antibody - Protein Information**Name** MMP26**Function**

May hydrolyze collagen type IV, fibronectin, fibrinogen, beta-casein, type I gelatin and alpha-1 proteinase inhibitor. Is also able to activate progelatinase B.

Cellular Location

Secreted, extracellular space, extracellular matrix

Tissue Location

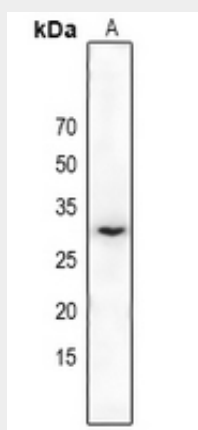
Expressed specifically in uterus and placenta. Is also widely expressed in malignant tumors from different sources as well as in diverse tumor cell lines

Anti-MMP26 Antibody - Protocols

Provided below are standard protocols that you may find useful for product applications.

- [Western Blot](#)
- [Blocking Peptides](#)
- [Dot Blot](#)
- [Immunohistochemistry](#)
- [Immunofluorescence](#)
- [Immunoprecipitation](#)
- [Flow Cytometry](#)
- [Cell Culture](#)

Anti-MMP26 Antibody - Images



Western blot analysis of MMP26 expression in rat kidney (A) whole cell lysates.

Anti-MMP26 Antibody - Background

KLH-conjugated synthetic peptide encompassing a sequence within the center region of human MMP26. The exact sequence is proprietary.