

Anti-Pokemon Antibody
Rabbit polyclonal antibody to Pokemon
Catalog # AP60200**Specification**

Anti-Pokemon Antibody - Product Information

Application	WB
Primary Accession	O95365
Other Accession	O88939
Reactivity	Human, Mouse, Rat
Host	Rabbit
Clonality	Polyclonal
Calculated MW	61439

Anti-Pokemon Antibody - Additional Information**Gene ID** 51341**Other Names**

FBI1; LRF; ZBTB7; ZNF857A; Zinc finger and BTB domain-containing protein 7A; Factor binding IST protein 1; FBI-1; Factor that binds to inducer of short transcripts protein 1; HIV-1 1st-binding protein 1; Leukemia/lymphoma-related factor; POZ and Krueppel erythroid myeloid ontogenic factor; POK erythroid myeloid ontogenic factor; Pokemon; TTF-I-interacting peptide 21; TIP21; Zinc finger protein 857A

Target/Specificity

Recognizes endogenous levels of Pokemon protein.

Dilution

WB~~WB (1/500 - 1/1000)

Format

Liquid in 0.42% Potassium phosphate, 0.87% Sodium chloride, pH 7.3, 30% glycerol, and 0.09% (W/V) sodium azide.

Storage

Store at -20 °C. Stable for 12 months from date of receipt

Anti-Pokemon Antibody - Protein Information**Name** ZBTB7A ([HGNC:18078](#))**Function**

Transcription factor that represses the transcription of a wide range of genes involved in cell proliferation and differentiation (PubMed: [14701838](http://www.uniprot.org/citations/14701838), PubMed: [17595526](http://www.uniprot.org/citations/17595526), PubMed: [20812024](http://www.uniprot.org/citations/20812024), PubMed: [25514493](http://www.uniprot.org/citations/25514493))

target="_blank">25514493, PubMed:26455326, PubMed:26816381). Directly and specifically binds to the consensus sequence 5'-[GA][CA]GACCCCCCCC-3' and represses transcription both by regulating the organization of chromatin and through the direct recruitment of transcription factors to gene regulatory regions (PubMed:12004059, PubMed:17595526, PubMed:20812024, PubMed:25514493, PubMed:26816381). Negatively regulates SMAD4 transcriptional activity in the TGF-beta signaling pathway through these two mechanisms (PubMed:25514493). That is, recruits the chromatin regulator HDAC1 to the SMAD4-DNA complex and in parallel prevents the recruitment of the transcriptional activators CREBBP and EP300 (PubMed:25514493). Collaborates with transcription factors like RELA to modify the accessibility of gene transcription regulatory regions to secondary transcription factors (By similarity). Also directly interacts with transcription factors like SP1 to prevent their binding to DNA (PubMed:12004059). Functions as an androgen receptor/AR transcriptional corepressor by recruiting NCOR1 and NCOR2 to the androgen response elements/ARE on target genes (PubMed:20812024). Thereby, negatively regulates androgen receptor signaling and androgen- induced cell proliferation (PubMed:20812024). Involved in the switch between fetal and adult globin expression during erythroid cells maturation (PubMed:26816381). Through its interaction with the NuRD complex regulates chromatin at the fetal globin genes to repress their transcription (PubMed:26816381). Specifically represses the transcription of the tumor suppressor ARF isoform from the CDKN2A gene (By similarity). Efficiently abrogates E2F1-dependent CDKN2A transactivation (By similarity). Regulates chondrogenesis through the transcriptional repression of specific genes via a mechanism that also requires histone deacetylation (By similarity). Regulates cell proliferation through the transcriptional regulation of genes involved in glycolysis (PubMed:26455326). Involved in adipogenesis through the regulation of genes involved in adipocyte differentiation (PubMed:14701838). Plays a key role in the differentiation of lymphoid progenitors into B and T lineages (By similarity). Promotes differentiation towards the B lineage by inhibiting the T-cell instructive Notch signaling pathway through the specific transcriptional repression of Notch downstream target genes (By similarity). Also regulates osteoclast differentiation (By similarity). May also play a role, independently of its transcriptional activity, in double-strand break repair via classical non-homologous end joining/cNHEJ (By similarity). Recruited to double-strand break sites on damage DNA, interacts with the DNA-dependent protein kinase complex and directly regulates its stability and activity in DNA repair (By similarity). May also modulate the splicing activity of KHDRBS1 toward BCL2L1 in a mechanism which is histone deacetylase-dependent and thereby negatively regulates the pro-apoptotic effect of KHDRBS1 (PubMed:24514149).

Cellular Location

Nucleus. Note=Recruited to double-strand break sites of damaged DNA.
{ECO:0000250|UniProtKB:O88939}

Tissue Location

Widely expressed (PubMed:9927193). In normal thymus, expressed in medullary epithelial cells and Hassle's corpuscles (at protein level) (PubMed:15662416). In tonsil, expressed in squamous epithelium and germinal center lymphocytes (at protein level) (PubMed:15662416). Up-regulated in a subset of lymphomas, as well as in a subset of breast, lung, colon, prostate and bladder

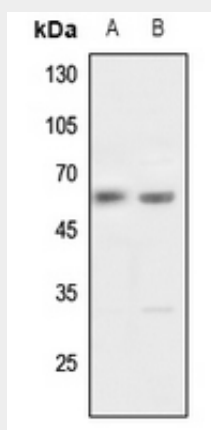
carcinomas (at protein level) (PubMed:15662416). Expressed in adipose tissues (PubMed:14701838).

Anti-Pokemon Antibody - Protocols

Provided below are standard protocols that you may find useful for product applications.

- [Western Blot](#)
- [Blocking Peptides](#)
- [Dot Blot](#)
- [Immunohistochemistry](#)
- [Immunofluorescence](#)
- [Immunoprecipitation](#)
- [Flow Cytometry](#)
- [Cell Culture](#)

Anti-Pokemon Antibody - Images



Western blot analysis of Pokemon expression in Hela (A), HGC27 (B) whole cell lysates.

Anti-Pokemon Antibody - Background

KLH-conjugated synthetic peptide encompassing a sequence within the center region of human Pokemon. The exact sequence is proprietary.