

Anti-REG4 Antibody
Rabbit polyclonal antibody to REG4
Catalog # AP60204**Specification**

Anti-REG4 Antibody - Product Information

Application	WB, IHC
Primary Accession	Q9BYZ8
Other Accession	Q9D8G5
Reactivity	Human, Mouse, Rat, Pig
Host	Rabbit
Clonality	Polyclonal
Calculated MW	18230

Anti-REG4 Antibody - Additional Information**Gene ID** 83998**Other Names**

GISP; RELP; Regenerating islet-derived protein 4; REG-4; Gastrointestinal secretory protein; REG-like protein; Regenerating islet-derived protein IV; Reg IV

Target/Specificity

Recognizes endogenous levels of REG4 protein.

Dilution

WB~~WB (1/500 - 1/1000), IH (1/100 - 1/200)

IHC~~1:100~500

Format

Liquid in 0.42% Potassium phosphate, 0.87% Sodium chloride, pH 7.3, 30% glycerol, and 0.09% (W/V) sodium azide.

Storage

Store at -20 °C. Stable for 12 months from date of receipt

Anti-REG4 Antibody - Protein Information**Name** REG4**Synonyms** GISP, RELP**Function**

Calcium-independent lectin displaying mannose-binding specificity and able to maintain carbohydrate recognition activity in an acidic environment. May be involved in inflammatory and metaplastic responses of the gastrointestinal epithelium.

Cellular Location

Secreted.

Tissue Location

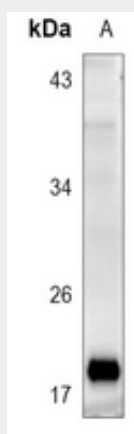
Highly expressed in the gastrointestinal tract including the duodenum, jejunum, ileum, ileocecum, appendix, descending colon, pancreas and small intestine. Weakly expressed in normal colon and stomach. Strongly expressed in most colorectal tumors than in normal colon. Preferentially expressed in mucinous tumors and in some cases neuro-endocrine tumors. Expressed in mucus-secreting cells and enterocyte-like cells. In small intestine expressed at the basal perinuclear zone of goblet cells.

Anti-REG4 Antibody - Protocols

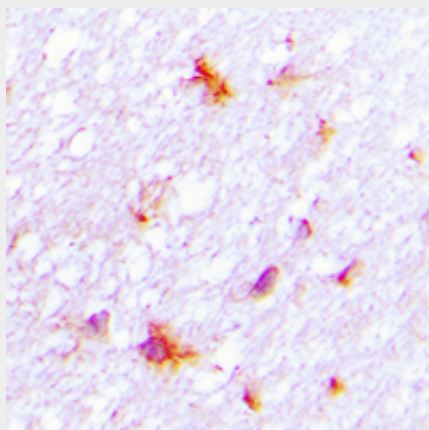
Provided below are standard protocols that you may find useful for product applications.

- [Western Blot](#)
- [Blocking Peptides](#)
- [Dot Blot](#)
- [Immunohistochemistry](#)
- [Immunofluorescence](#)
- [Immunoprecipitation](#)
- [Flow Cytometry](#)
- [Cell Culture](#)

Anti-REG4 Antibody - Images



Western blot analysis of REG4 expression in mouse pancreas (A) whole cell lysates.



Immunohistochemical analysis of REG4 staining in human brain formalin fixed paraffin embedded tissue section. The section was pre-treated using heat mediated antigen retrieval with sodium citrate buffer (pH 6.0). The section was then incubated with the antibody at room temperature and detected using an HRP conjugated compact polymer system. DAB was used as the chromogen. The section was then counterstained with haematoxylin and mounted with DPX.

Anti-REG4 Antibody - Background

KLH-conjugated synthetic peptide encompassing a sequence within the center region of human REG4. The exact sequence is proprietary.