

Anti-Septin 8 Antibody
Rabbit polyclonal antibody to Septin 8
Catalog # AP60209**Specification**

Anti-Septin 8 Antibody - Product Information

Application	WB
Primary Accession	O92599
Other Accession	Q8CHH9
Reactivity	Human, Mouse, Rat, Rabbit, Monkey, Bovine
Host	Rabbit
Clonality	Polyclonal
Calculated MW	55756

Anti-Septin 8 Antibody - Additional Information**Gene ID** 23176**Other Names**

KIAA0202; Septin-8

Target/Specificity

Recognizes endogenous levels of Septin 8 protein.

Dilution

WB~~WB (1/500 - 1/1000)

Format

Liquid in 0.42% Potassium phosphate, 0.87% Sodium chloride, pH 7.3, 30% glycerol, and 0.09% (W/V) sodium azide.

Storage

Store at -20 °C. Stable for 12 months from date of receipt

Anti-Septin 8 Antibody - Protein Information**Name** SEPTIN8 ([HGNC:16511](#))**Function**

Filament-forming cytoskeletal GTPase (By similarity). May play a role in platelet secretion (PubMed: 15116257). Seems to participate in the process of SNARE complex formation in synaptic vesicles (By similarity).

Cellular Location

Cytoplasm {ECO:0000250|UniProtKB:B0BNF1}. Cytoplasm, cytoskeleton. Synapse {ECO:0000250|UniProtKB:B0BNF1}. Cell projection, axon {ECO:0000250|UniProtKB:B0BNF1}.

Cytoplasmic vesicle, secretory vesicle, synaptic vesicle membrane {ECO:0000250|UniProtKB:B0BNF1}. Presynapse {ECO:0000250|UniProtKB:B0BNF1}. Note=Expressed in axons of immature neurons, localizes to synapses in mature neurons (By similarity). In platelets, found in areas surrounding alpha-granules (PubMed:15116257) {ECO:0000250|UniProtKB:B0BNF1, ECO:0000269|PubMed:15116257}

Tissue Location

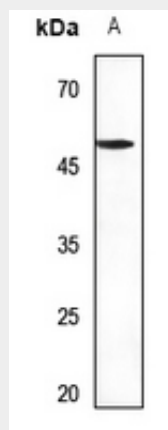
Widely expressed, including in brain, heart and platelets; most abundant in aorta. Isoform 2 is expressed at low levels in specific brain areas, such as occipital pole, frontal lobe, temporal lobe and putamen. Isoform 1 and 3 are highly expressed in specific brain areas, such as occipital pole, frontal lobe, temporal lobe and putamen. Isoform 2 is highly expressed in prostate, testis and ovary Isoform 1 and isoform 3 are expressed at low levels in prostate, testis and ovary.

Anti-Septin 8 Antibody - Protocols

Provided below are standard protocols that you may find useful for product applications.

- [Western Blot](#)
- [Blocking Peptides](#)
- [Dot Blot](#)
- [Immunohistochemistry](#)
- [Immunofluorescence](#)
- [Immunoprecipitation](#)
- [Flow Cytometry](#)
- [Cell Culture](#)

Anti-Septin 8 Antibody - Images



Western blot analysis of Septin 8 expression in rat brain (A) whole cell lysates.

Anti-Septin 8 Antibody - Background

KLH-conjugated synthetic peptide encompassing a sequence within the center region of human Septin 8. The exact sequence is proprietary.