

**Anti-A2M Antibody**  
**Rabbit polyclonal antibody to A2M**  
**Catalog # AP60210****Specification**

---

**Anti-A2M Antibody - Product Information**

Application	WB
Primary Accession	<a href="#">P01023</a>
Reactivity	Human, Rat, Monkey
Host	Rabbit
Clonality	Polyclonal
Calculated MW	163291

**Anti-A2M Antibody - Additional Information****Gene ID 2****Other Names**

CPAMD5; Alpha-2-macroglobulin; Alpha-2-M; C3 and PZP-like alpha-2-macroglobulin domain-containing protein 5

**Target/Specificity**

Recognizes endogenous levels of A2M protein.

**Dilution**

WB~~WB (1/500 - 1/1000)

**Format**

Liquid in 0.42% Potassium phosphate, 0.87% Sodium chloride, pH 7.3, 30% glycerol, and 0.09% (W/V) sodium azide.

**Storage**

Store at -20 °C. Stable for 12 months from date of receipt

**Anti-A2M Antibody - Protein Information****Name A2M****Synonyms CPAMD5****Function**

Is able to inhibit all four classes of proteinases by a unique 'trapping' mechanism. This protein has a peptide stretch, called the 'bait region' which contains specific cleavage sites for different proteinases. When a proteinase cleaves the bait region, a conformational change is induced in the protein which traps the proteinase. The entrapped enzyme remains active against low molecular weight substrates (activity against high molecular weight substrates is greatly reduced). Following cleavage in the bait region, a thioester bond is hydrolyzed and mediates the covalent binding of the protein to the proteinase.

**Cellular Location**

Secreted.

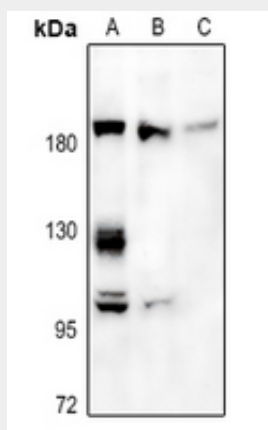
**Tissue Location**

Secreted in plasma..

**Anti-A2M Antibody - Protocols**

Provided below are standard protocols that you may find useful for product applications.

- [Western Blot](#)
- [Blocking Peptides](#)
- [Dot Blot](#)
- [Immunohistochemistry](#)
- [Immunofluorescence](#)
- [Immunoprecipitation](#)
- [Flow Cytometry](#)
- [Cell Culture](#)

**Anti-A2M Antibody - Images**

Western blot analysis of A2M expression in A375 (A), LO2 (B), PC12 (C) whole cell lysates.

**Anti-A2M Antibody - Background**

KLH-conjugated synthetic peptide encompassing a sequence within the center region of human A2M. The exact sequence is proprietary.