

Anti-Alpha-2A Adrenergic Receptor Antibody
Rabbit polyclonal antibody to Alpha-2A Adrenergic Receptor
Catalog # AP60214**Specification**

Anti-Alpha-2A Adrenergic Receptor Antibody - Product Information

| | |
|-------------------|------------------------|
| Application | WB, IP, IF/IC |
| Primary Accession | P08913 |
| Reactivity | Human |
| Host | Rabbit |
| Clonality | Polyclonal |
| Calculated MW | 50647 |

Anti-Alpha-2A Adrenergic Receptor Antibody - Additional Information**Gene ID** 150**Other Names**

ADRA2R; ADRAR; Alpha-2A adrenergic receptor; Alpha-2 adrenergic receptor subtype C10; Alpha-2A adrenoreceptor; Alpha-2A adrenoceptor; Alpha-2AAR

Target/Specificity

Recognizes endogenous levels of Alpha-2A Adrenergic Receptor protein.

Dilution

WB~~WB (1/500 - 1/1000), IF/IC (1/100 - 1/500), IP (1/10 - 1/100)

IP~~N/A

IF/IC~~N/A

Format

Liquid in 0.42% Potassium phosphate, 0.87% Sodium chloride, pH 7.3, 30% glycerol, and 0.09% (W/V) sodium azide.

Storage

Store at -20 °C. Stable for 12 months from date of receipt

Anti-Alpha-2A Adrenergic Receptor Antibody - Protein Information**Name** ADRA2A ([HGNC:281](#))**Synonyms** ADRA2R, ADRAR**Function**

Alpha-2 adrenergic receptors mediate the catecholamine- induced inhibition of adenylate cyclase through the action of G proteins. The rank order of potency for agonists of this receptor is oxymetazoline > clonidine > epinephrine > norepinephrine > phenylephrine > dopamine > p-synephrine > p-tyramine > serotonin = p- octopamine. For antagonists, the rank order is yohimbine > phentolamine = mianserine > chlorpromazine = spiperone = prazosin > propranolol

> alprenolol = pindolol.

Cellular Location

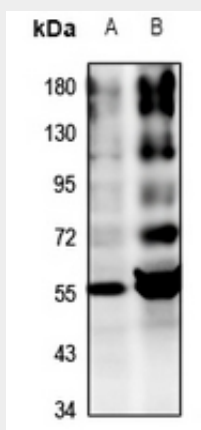
Cell membrane; Multi-pass membrane protein

Anti-Alpha-2A Adrenergic Receptor Antibody - Protocols

Provided below are standard protocols that you may find useful for product applications.

- [Western Blot](#)
- [Blocking Peptides](#)
- [Dot Blot](#)
- [Immunohistochemistry](#)
- [Immunofluorescence](#)
- [Immunoprecipitation](#)
- [Flow Cytometry](#)
- [Cell Culture](#)

Anti-Alpha-2A Adrenergic Receptor Antibody - Images



Western blot analysis of Alpha-2A Adrenergic Receptor expression in HeLa (A), A2780 (B) whole cell lysates.



Immunofluorescent analysis of Alpha-2A Adrenergic Receptor staining in HepG2 cells. Formalin-fixed cells were permeabilized with 0.1% Triton X-100 in TBS for 5-10 minutes and blocked with 3% BSA-PBS for 30 minutes at room temperature. Cells were probed with the

primary antibody in 3% BSA-PBS and incubated overnight at 4 °C in a humidified chamber. Cells were washed with PBST and incubated with a DyLight 594-conjugated secondary antibody (red) in PBS at room temperature in the dark. DAPI was used to stain the cell nuclei (blue).

Anti-Alpha-2A Adrenergic Receptor Antibody - Background

KLH-conjugated synthetic peptide encompassing a sequence within the center region of human Alpha-2A Adrenergic Receptor. The exact sequence is proprietary.