

Anti-Annexin A7 Antibody
Rabbit polyclonal antibody to Annexin A7
Catalog # AP60219

Specification

Anti-Annexin A7 Antibody - Product Information

Application	WB
Primary Accession	P20073
Other Accession	Q07076
Reactivity	Human, Mouse, Rabbit, Monkey, Pig, Bovine
Host	Rabbit
Clonality	Polyclonal
Calculated MW	52739

Anti-Annexin A7 Antibody - Additional Information

Gene ID 310

Other Names

ANX7; SNX; Annexin A7; Annexin VII; Annexin-7; Synexin

Target/Specificity

KLH-conjugated synthetic peptide encompassing a sequence within the center region of human Annexin A7. The exact sequence is proprietary.

Dilution

WB~~WB (1/500 - 1/1000)

Format

Liquid in 0.42% Potassium phosphate, 0.87% Sodium chloride, pH 7.3, 30% glycerol, and 0.09% (W/V) sodium azide.

Storage

Store at -20 °C. Stable for 12 months from date of receipt

Anti-Annexin A7 Antibody - Protein Information

Name ANXA7

Synonyms ANX7, SNX

Function

Calcium/phospholipid-binding protein which promotes membrane fusion and is involved in exocytosis.

Tissue Location

Isoform 1 is expressed in brain, heart and skeletal muscle. Isoform 2 is more abundant in liver,

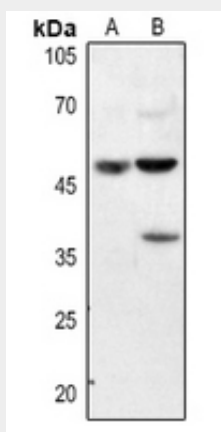
lung, kidney, spleen, fibroblasts and placenta.

Anti-Annexin A7 Antibody - Protocols

Provided below are standard protocols that you may find useful for product applications.

- [Western Blot](#)
- [Blocking Peptides](#)
- [Dot Blot](#)
- [Immunohistochemistry](#)
- [Immunofluorescence](#)
- [Immunoprecipitation](#)
- [Flow Cytometry](#)
- [Cell Culture](#)

Anti-Annexin A7 Antibody - Images



Western blot analysis of Annexin A7 expression in HEK293T (A), HeLa (B) whole cell lysates.

Anti-Annexin A7 Antibody - Background

KLH-conjugated synthetic peptide encompassing a sequence within the center region of human Annexin A7. The exact sequence is proprietary.