

**Anti-Apolipoprotein L3 Antibody**  
Rabbit polyclonal antibody to Apolipoprotein L3  
Catalog # AP60222

**Specification**

---

**Anti-Apolipoprotein L3 Antibody - Product Information**

|                   |                        |
|-------------------|------------------------|
| Application       | WB, IHC                |
| Primary Accession | <a href="#">O95236</a> |
| Reactivity        | Human, Mouse, Rat      |
| Host              | Rabbit                 |
| Clonality         | Polyclonal             |
| Calculated MW     | 44278                  |

**Anti-Apolipoprotein L3 Antibody - Additional Information**

**Gene ID** 80833

**Other Names**

Apolipoprotein L3; Apolipoprotein L-III; ApoL-III; TNF-inducible protein CG12-1; CG12\_1

**Target/Specificity**

Recognizes endogenous levels of Apolipoprotein L3 protein.

**Dilution**

WB~~WB (1/500 - 1/1000), IH (1/100 - 1/200)  
IHC~~1:100~500

**Format**

Liquid in 0.42% Potassium phosphate, 0.87% Sodium chloride, pH 7.3, 30% glycerol, and 0.09% (W/V) sodium azide.

**Storage**

Store at -20 °C. Stable for 12 months from date of receipt

**Anti-Apolipoprotein L3 Antibody - Protein Information**

**Name** APOL3

**Function**

May affect the movement of lipids in the cytoplasm or allow the binding of lipids to organelles.

**Cellular Location**

Cytoplasm.

**Tissue Location**

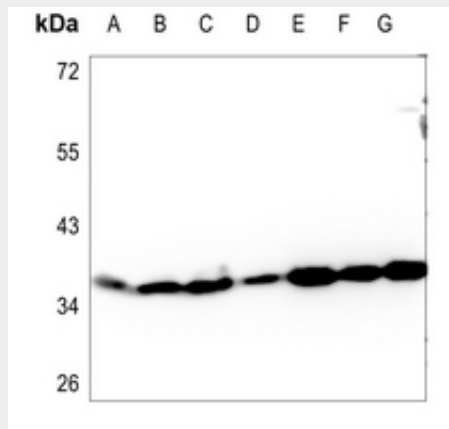
Widely expressed; the highest levels are in prostate, lung and placenta; also detected in kidney, bone marrow, spleen, thymus, spinal cord, adrenal gland, salivary gland, trachea and mammary gland; levels are low in brain, heart, fetal liver, pancreas and testis

## Anti-Apolipoprotein L3 Antibody - Protocols

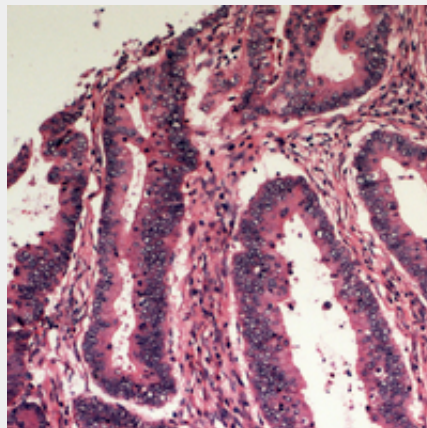
Provided below are standard protocols that you may find useful for product applications.

- [Western Blot](#)
- [Blocking Peptides](#)
- [Dot Blot](#)
- [Immunohistochemistry](#)
- [Immunofluorescence](#)
- [Immunoprecipitation](#)
- [Flow Cytometry](#)
- [Cell Culture](#)

## Anti-Apolipoprotein L3 Antibody - Images



Western blot analysis of Apolipoprotein L3 expression in HEK293T (A), A549 (B), H1688 (C), mouse lung (D), mouse spleen (E), rat testis (F), rat spleen (G) whole cell lysates.



Immunohistochemical analysis of Apolipoprotein L3 staining in human colon cancer formalin fixed paraffin embedded tissue section. The section was pre-treated using heat mediated antigen retrieval with sodium citrate buffer (pH 6.0). The section was then incubated with the antibody at room temperature and detected using an HRP conjugated compact polymer system. DAB was used as the chromogen. The section was then counterstained with haematoxylin and mounted with DPX.

## Anti-Apolipoprotein L3 Antibody - Background

KLH-conjugated synthetic peptide encompassing a sequence within the center region of human Apolipoprotein L3. The exact sequence is proprietary.