

Anti-Osteocalcin Antibody
Rabbit polyclonal antibody to Osteocalcin
Catalog # AP60231**Specification**

Anti-Osteocalcin Antibody - Product Information

Application	WB
Primary Accession	P02818
Other Accession	P86546
Reactivity	Human, Mouse, Rat
Host	Rabbit
Clonality	Polyclonal
Calculated MW	10963

Anti-Osteocalcin Antibody - Additional Information**Gene ID** 632**Other Names**

Osteocalcin; Bone Gla protein; BGP; Gamma-carboxyglutamic acid-containing protein

Target/Specificity

Recognizes endogenous levels of Osteocalcin protein.

Dilution

WB~~WB (1/500 - 1/1000)

Format

Liquid in 0.42% Potassium phosphate, 0.87% Sodium chloride, pH 7.3, 30% glycerol, and 0.09% (W/V) sodium azide.

Storage

Store at -20 °C. Stable for 12 months from date of receipt

Anti-Osteocalcin Antibody - Protein Information**Name** BGLAP**Function**Bone protein that constitutes 1-2% of the total bone protein, and which acts as a negative regulator of bone formation (PubMed: [3019668](http://www.uniprot.org/citations/3019668), PubMed: [6967872](http://www.uniprot.org/citations/6967872)). Functions to limit bone formation without impairing bone resorption or mineralization (By similarity). It binds strongly to apatite and calcium (PubMed: [6967872](http://www.uniprot.org/citations/6967872)).**Cellular Location**

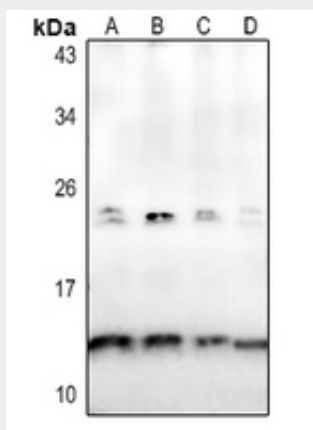
Secreted.

Anti-Osteocalcin Antibody - Protocols

Provided below are standard protocols that you may find useful for product applications.

- [Western Blot](#)
- [Blocking Peptides](#)
- [Dot Blot](#)
- [Immunohistochemistry](#)
- [Immunofluorescence](#)
- [Immunoprecipitation](#)
- [Flow Cytometry](#)
- [Cell Culture](#)

Anti-Osteocalcin Antibody - Images



Western blot analysis of Osteocalcin expression in HCT116 (A), HEK293T (B), PC12 (C), NIH3T3 (D) whole cell lysates.

Anti-Osteocalcin Antibody - Background

KLH-conjugated synthetic peptide encompassing a sequence within the center region of human Osteocalcin. The exact sequence is proprietary.