

**Anti-CaMK2 alpha/delta (pT286) Antibody**  
**Rabbit polyclonal antibody to CaMK2 alpha/delta (pT286)**  
**Catalog # AP60234**

**Specification**

---

**Anti-CaMK2 alpha/delta (pT286) Antibody - Product Information**

Application	WB, IF/IC, IHC
Primary Accession	<a href="#">Q9UQM7</a> , <a href="#">Q13557</a>
Other Accession	<a href="#">P11798</a> , <a href="#">Q6PHZ2</a>
Reactivity	Human, Mouse, Rat, Rabbit, Monkey, Pig, Chicken, Bovine
Host	Rabbit
Clonality	Polyclonal

**Anti-CaMK2 alpha/delta (pT286) Antibody - Additional Information**

**Other Names**

CAMK2A; CAMKA; KIAA0968; Calcium/calmodulin-dependent protein kinase type II subunit alpha; CaM kinase II subunit alpha; CaMK-II subunit alpha; CAMK2D; CAMKD; Calcium/calmodulin-dependent protein kinase type II subunit delta; CaM kinase II subunit delta; CaMK-II subunit delta

**Target/Specificity**

Recognizes endogenous levels of CaMK2 alpha/delta (pT286) protein.

**Dilution**

WB~~WB (1/500 - 1/1000), IH (1/100 - 1/200), IF/IC (1/100 - 1/500)

IF/IC~~N/A

IHC~~1:100~500

**Format**

Liquid in 0.42% Potassium phosphate, 0.87% Sodium chloride, pH 7.3, 30% glycerol, and 0.09% (W/V) sodium azide.

**Storage**

Store at -20 °C. Stable for 12 months from date of receipt

**Anti-CaMK2 alpha/delta (pT286) Antibody - Protein Information**

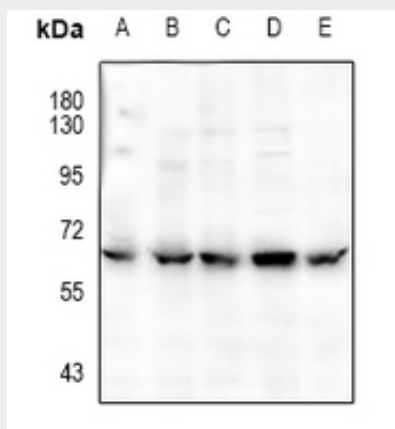
**Anti-CaMK2 alpha/delta (pT286) Antibody - Protocols**

Provided below are standard protocols that you may find useful for product applications.

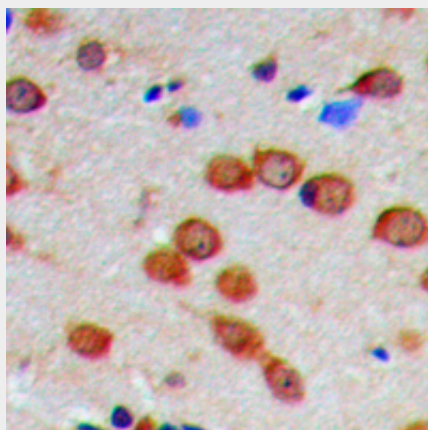
- [Western Blot](#)
- [Blocking Peptides](#)
- [Dot Blot](#)

- [Immunohistochemistry](#)
- [Immunofluorescence](#)
- [Immunoprecipitation](#)
- [Flow Cytometry](#)
- [Cell Culture](#)

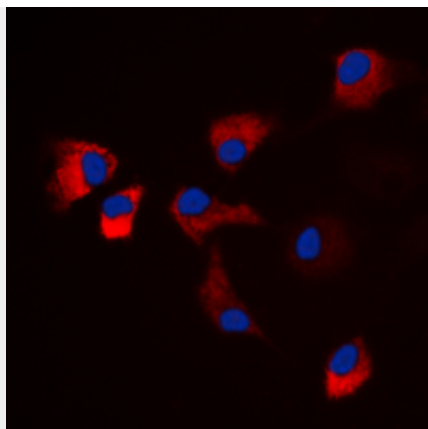
#### Anti-CaMK2 alpha/delta (pT286) Antibody - Images



Western blot analysis of CaMK2 alpha/delta (pT286) expression in HEK293T (A), H1792 (B), HepG2 (C), Panc1 (D), AML12 (E) whole cell lysates.



Immunohistochemical analysis of CaMK2 alpha/delta (pT286) staining in human brain formalin fixed paraffin embedded tissue section. The section was pre-treated using heat mediated antigen retrieval with sodium citrate buffer (pH 6.0). The section was then incubated with the antibody at room temperature and detected using an HRP conjugated compact polymer system. DAB was used as the chromogen. The section was then counterstained with haematoxylin and mounted with DPX.



Immunofluorescent analysis of CaMK2 alpha/delta (pT286) staining in HeLa cells. Formalin-fixed cells were permeabilized with 0.1% Triton X-100 in TBS for 5-10 minutes and blocked with 3% BSA-PBS for 30 minutes at room temperature. Cells were probed with the primary antibody in 3% BSA-PBS and incubated overnight at 4 °C in a humidified chamber. Cells were washed with PBST and incubated with a DyLight 594-conjugated secondary antibody (red) in PBS at room temperature in the dark. DAPI was used to stain the cell nuclei (blue).

#### **Anti-CaMK2 alpha/delta (pT286) Antibody - Background**

KLH-conjugated synthetic peptide encompassing a sequence within the center region of human CaMK2 alpha/delta (pT286). The exact sequence is proprietary.