

Anti-CCR4 Antibody
Rabbit polyclonal antibody to CCR4
Catalog # AP60238**Specification**

Anti-CCR4 Antibody - Product Information

Application	WB
Primary Accession	P51679
Other Accession	P51680
Reactivity	Human, Mouse, Dog
Host	Rabbit
Clonality	Polyclonal
Calculated MW	41403

Anti-CCR4 Antibody - Additional Information**Gene ID** 1233**Other Names**

CMKBR4; C-C chemokine receptor type 4; C-C CKR-4; CC-CKR-4; CCR-4; CCR4; K5-5; CD194

Target/Specificity

Recognizes endogenous levels of CCR4 protein.

Dilution

WB~~WB (1/500 - 1/1000)

Format

Liquid in 0.42% Potassium phosphate, 0.87% Sodium chloride, pH 7.3, 30% glycerol, and 0.09% (W/V) sodium azide.

Storage

Store at -20 °C. Stable for 12 months from date of receipt

Anti-CCR4 Antibody - Protein Information**Name** CCR4**Synonyms** CMKBR4**Function**

High affinity receptor for the C-C type chemokines CCL17/TARC, CCL22/MDC and CKLF isoform 1/CKLF1. The activity of this receptor is mediated by G(i) proteins which activate a phosphatidylinositol-calcium second messenger system. Can function as a chemoattractant homing receptor on circulating memory lymphocytes and as a coreceptor for some primary HIV-2 isolates. In the CNS, could mediate hippocampal-neuron survival.

Cellular Location

Cell membrane; Multi-pass membrane protein.

Tissue Location

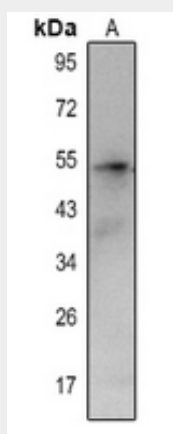
Predominantly expressed in the thymus, in peripheral blood leukocytes, including T-cells, mostly CD4+ cells, and basophils, and in platelets; at lower levels, in the spleen and in monocytes (PubMed:10754297, PubMed:9169480). Detected also in macrophages, IL-2-activated natural killer cells and skin-homing memory T-cells, mostly the ones expressing the cutaneous lymphocyte antigen (CLA). Expressed in brain microvascular and coronary artery endothelial cells (PubMed:10754297).

Anti-CCR4 Antibody - Protocols

Provided below are standard protocols that you may find useful for product applications.

- [Western Blot](#)
- [Blocking Peptides](#)
- [Dot Blot](#)
- [Immunohistochemistry](#)
- [Immunofluorescence](#)
- [Immunoprecipitation](#)
- [Flow Cytometry](#)
- [Cell Culture](#)

Anti-CCR4 Antibody - Images



Western blot analysis of CCR4 expression in H446 (A) whole cell lysates.

Anti-CCR4 Antibody - Background

KLH-conjugated synthetic peptide encompassing a sequence within the N-term region of human CCR4. The exact sequence is proprietary.