

Anti-CD79b Antibody
Rabbit polyclonal antibody to CD79b
Catalog # AP60242**Specification**

Anti-CD79b Antibody - Product Information

Application	WB
Primary Accession	P40259
Other Accession	P15530
Reactivity	Human, Mouse, Rat
Host	Rabbit
Clonality	Polyclonal
Calculated MW	26048

Anti-CD79b Antibody - Additional Information**Gene ID** 974**Other Names**

B29; IGB; B-cell antigen receptor complex-associated protein beta chain; B-cell-specific glycoprotein B29; Ig-beta; Immunoglobulin-associated B29 protein; CD79b

Target/Specificity

Recognizes endogenous levels of CD79b protein.

Dilution

WB~~WB (1/500 - 1/1000)

Format

Liquid in 0.42% Potassium phosphate, 0.87% Sodium chloride, pH 7.3, 30% glycerol, and 0.09% (W/V) sodium azide.

Storage

Store at -20 °C. Stable for 12 months from date of receipt

Anti-CD79b Antibody - Protein Information**Name** CD79B**Synonyms** B29, IGB**Function**

Required in cooperation with CD79A for initiation of the signal transduction cascade activated by the B-cell antigen receptor complex (BCR) which leads to internalization of the complex, trafficking to late endosomes and antigen presentation. Enhances phosphorylation of CD79A, possibly by recruiting kinases which phosphorylate CD79A or by recruiting proteins which bind to CD79A and protect it from dephosphorylation.

Cellular Location

Cell membrane; Single-pass type I membrane protein. Note=Following antigen binding, the BCR has been shown to translocate from detergent-soluble regions of the cell membrane to lipid rafts although signal transduction through the complex can also occur outside lipid rafts.

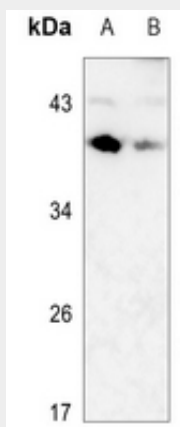
Tissue Location

B-cells.

Anti-CD79b Antibody - Protocols

Provided below are standard protocols that you may find useful for product applications.

- [Western Blot](#)
- [Blocking Peptides](#)
- [Dot Blot](#)
- [Immunohistochemistry](#)
- [Immunofluorescence](#)
- [Immunoprecipitation](#)
- [Flow Cytometry](#)
- [Cell Culture](#)

Anti-CD79b Antibody - Images

Western blot analysis of CD79b expression in mouse heart (A), mouse spleen (B) whole cell lysates.

Anti-CD79b Antibody - Background

KLH-conjugated synthetic peptide encompassing a sequence within the center region of human CD79b. The exact sequence is proprietary.