

**Anti-CDCA2 Antibody**  
**Rabbit polyclonal antibody to CDCA2**  
**Catalog # AP60243****Specification**

---

**Anti-CDCA2 Antibody - Product Information**

Application	WB, IH
Primary Accession	<a href="#">Q69YH5</a>
Reactivity	Human, Rat
Host	Rabbit
Clonality	Polyclonal
Calculated MW	112676

**Anti-CDCA2 Antibody - Additional Information****Gene ID** 157313**Other Names**

Cell division cycle-associated protein 2; Recruits PP1 onto mitotic chromatin at anaphase protein; Repo-Man

**Target/Specificity**

Recognizes endogenous levels of CDCA2 protein.

**Dilution**

WB~~WB (1/500 - 1/1000), IH (1/100 - 1/200)

IH~~WB (1/500 - 1/1000), IH (1/100 - 1/200)

**Format**

Liquid in 0.42% Potassium phosphate, 0.87% Sodium chloride, pH 7.3, 30% glycerol, and 0.09% (W/V) sodium azide.

**Storage**

Store at -20 °C. Stable for 12 months from date of receipt

**Anti-CDCA2 Antibody - Protein Information****Name** CDCA2**Function**

Regulator of chromosome structure during mitosis required for condensin-depleted chromosomes to retain their compact architecture through anaphase. Acts by mediating the recruitment of phosphatase PP1-gamma subunit (PPP1CC) to chromatin at anaphase and into the following interphase. At anaphase onset, its association with chromatin targets a pool of PPP1CC to dephosphorylate substrates.

**Cellular Location**

Nucleus. Note=Excluded from the nucleolus. Present in nucleoplasm throughout the G1, S and G2

stages of the cell cycle. During M phase, it becomes diffuse throughout the cell as the nuclear membrane breaks down, and faintly accumulates later on metaphase chromatin. As the cell progresses to anaphase, it accumulates on chromatin

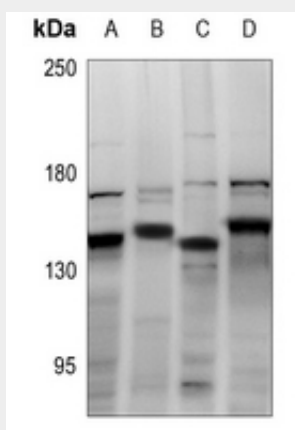
**Tissue Location**

Ubiquitously expressed.

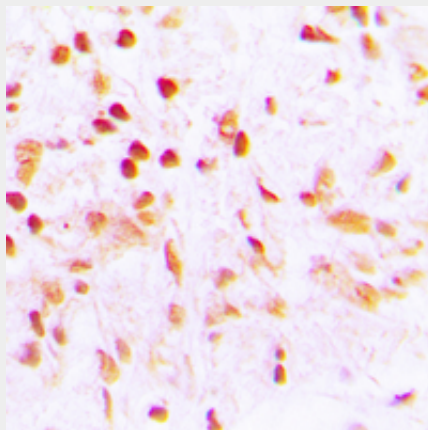
**Anti-CDCA2 Antibody - Protocols**

Provided below are standard protocols that you may find useful for product applications.

- [Western Blot](#)
- [Blocking Peptides](#)
- [Dot Blot](#)
- [Immunohistochemistry](#)
- [Immunofluorescence](#)
- [Immunoprecipitation](#)
- [Flow Cytometry](#)
- [Cell Culture](#)

**Anti-CDCA2 Antibody - Images**

Western blot analysis of CDCA2 expression in EC9706 (A), PC3 (B), C6 (C), HepG2 (D) whole cell lysates.



Immunohistochemical analysis of CDCA2 staining in human lung cancer formalin fixed paraffin

embedded tissue section. The section was pre-treated using heat mediated antigen retrieval with sodium citrate buffer (pH 6.0). The section was then incubated with the antibody at room temperature and detected using an HRP conjugated compact polymer system. DAB was used as the chromogen. The section was then counterstained with haematoxylin and mounted with DPX.

**Anti-CDCA2 Antibody - Background**

KLH-conjugated synthetic peptide encompassing a sequence within the center region of human CDCA2. The exact sequence is proprietary.