

Anti-Cadherin 19 Antibody
Rabbit polyclonal antibody to Cadherin 19
Catalog # AP60244**Specification**

Anti-Cadherin 19 Antibody - Product Information

Application	WB, IH
Primary Accession	O9H159
Reactivity	Human, Mouse, Rat, Monkey
Host	Rabbit
Clonality	Polyclonal
Calculated MW	87002

Anti-Cadherin 19 Antibody - Additional Information**Gene ID** 28513**Other Names**

CDH7L2; Cadherin-19

Target/Specificity

Recognizes endogenous levels of Cadherin 19 protein.

Dilution

WB~~WB (1/500 - 1/1000), IH (1/100 - 1/200), IF/IC (1/100 - 1/500)

IH~~WB (1/500 - 1/1000), IH (1/100 - 1/200), IF/IC (1/100 - 1/500)

Format

Liquid in 0.42% Potassium phosphate, 0.87% Sodium chloride, pH 7.3, 30% glycerol, and 0.09% (W/V) sodium azide.

Storage

Store at -20 °C. Stable for 12 months from date of receipt

Anti-Cadherin 19 Antibody - Protein Information**Name** CDH19**Synonyms** CDH7L2**Function**

Cadherins are calcium-dependent cell adhesion proteins. They preferentially interact with themselves in a homophilic manner in connecting cells; cadherins may thus contribute to the sorting of heterogeneous cell types.

Cellular Location

Cell membrane; Single-pass type I membrane protein

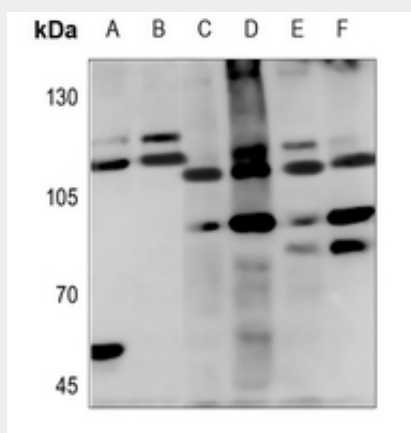
Tissue Location

Expressed in many tissues, with the exception of uterus

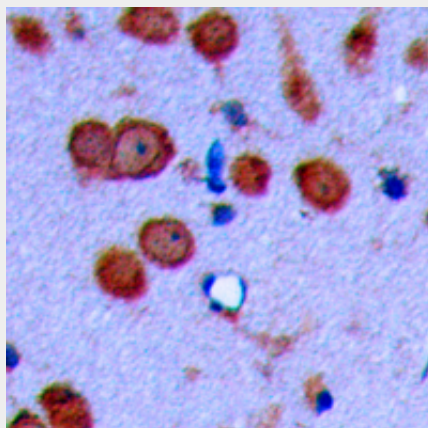
Anti-Cadherin 19 Antibody - Protocols

Provided below are standard protocols that you may find useful for product applications.

- [Western Blot](#)
- [Blocking Peptides](#)
- [Dot Blot](#)
- [Immunohistochemistry](#)
- [Immunofluorescence](#)
- [Immunoprecipitation](#)
- [Flow Cytometry](#)
- [Cell Culture](#)

Anti-Cadherin 19 Antibody - Images

Western blot analysis of Cadherin 19 expression in HEK293T (A), A549 (B), mouse spleen (C), mouse heart (D), rat spleen (E), rat heart (F) whole cell lysates.



Immunohistochemical analysis of Cadherin 19 staining in human brain formalin fixed paraffin embedded tissue section. The section was pre-treated using heat mediated antigen retrieval with sodium citrate buffer (pH 6.0). The section was then incubated with the antibody at room temperature and detected using an HRP conjugated compact polymer system. DAB was used as the chromogen. The section was then counterstained with haematoxylin and mounted with DPX.

Anti-Cadherin 19 Antibody - Background

KLH-conjugated synthetic peptide encompassing a sequence within the center region of human Cadherin 19. The exact sequence is proprietary.