

**Anti-CEP170 Antibody**  
**Rabbit polyclonal antibody to CEP170**  
**Catalog # AP60248****Specification**

---

**Anti-CEP170 Antibody - Product Information**

Application	WB, IHC
Primary Accession	<a href="#">Q5SW79</a>
Reactivity	Human
Host	Rabbit
Clonality	Polyclonal
Calculated MW	175293

**Anti-CEP170 Antibody - Additional Information****Gene ID** 9859**Other Names**

FAM68A; KAB; KIAA0470; Centrosomal protein of 170 kDa; Cep170; KARP-1-binding protein; KARP1-binding protein

**Target/Specificity**

Recognizes endogenous levels of CEP170 protein.

**Dilution**

WB~~WB (1/500 - 1/1000), IH (1/100 - 1/200)

IHC~~1:100~500

**Format**

Liquid in 0.42% Potassium phosphate, 0.87% Sodium chloride, pH 7.3, 30% glycerol, and 0.09% (W/V) sodium azide.

**Storage**

Store at -20 °C. Stable for 12 months from date of receipt

**Anti-CEP170 Antibody - Protein Information****Name** CEP170**Synonyms** FAM68A, KAB, KIAA0470**Function**

Plays a role in microtubule organization (PubMed:<a href="http://www.uniprot.org/citations/15616186" target="\_blank">15616186</a>). Required for centriole subdistal appendage assembly (PubMed:<a href="http://www.uniprot.org/citations/28422092" target="\_blank">28422092</a>).

**Cellular Location**

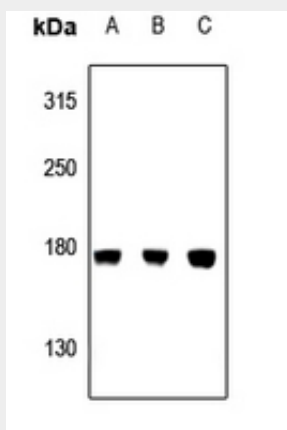
Cytoplasm, cytoskeleton, microtubule organizing center, centrosome. Cytoplasm, cytoskeleton, microtubule organizing center, centrosome, centriole. Cytoplasm, cytoskeleton, spindle.  
Note=Associated with the mature mother centriole. Associated with spindle microtubules during mitosis. Localizes to the distal appendage region of the centriole (PubMed:31789463). Localizes at the centriole proximal ends (PubMed:31789463).

### Anti-CEP170 Antibody - Protocols

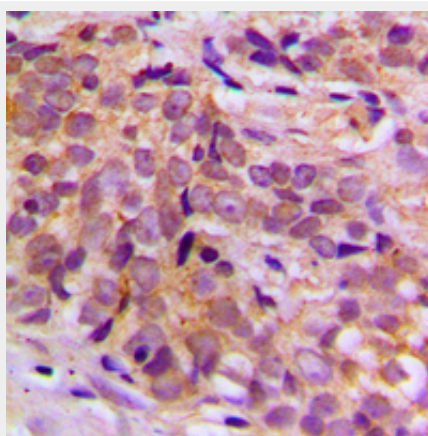
Provided below are standard protocols that you may find useful for product applications.

- [Western Blot](#)
- [Blocking Peptides](#)
- [Dot Blot](#)
- [Immunohistochemistry](#)
- [Immunofluorescence](#)
- [Immunoprecipitation](#)
- [Flow Cytometry](#)
- [Cell Culture](#)

### Anti-CEP170 Antibody - Images



Western blot analysis of CEP170 expression in LO2 (A), 293T (B), A549 (C) whole cell lysates.



Immunohistochemical analysis of CEP170 staining in human breast cancer formalin fixed paraffin embedded tissue section. The section was pre-treated using heat mediated antigen retrieval with sodium citrate buffer (pH 6.0). The section was then incubated with the antibody at room

temperature and detected using an HRP conjugated compact polymer system. DAB was used as the chromogen. The section was then counterstained with haematoxylin and mounted with DPX.

**Anti-CEP170 Antibody - Background**

KLH-conjugated synthetic peptide encompassing a sequence within the center region of human CEP170. The exact sequence is proprietary.