

**Anti-CERKL Antibody**  
**Rabbit polyclonal antibody to CERKL**  
**Catalog # AP60249****Specification**

---

**Anti-CERKL Antibody - Product Information**

Application	WB, IHC
Primary Accession	<a href="#">Q49MI3</a>
Reactivity	Human, Monkey
Host	Rabbit
Clonality	Polyclonal
Calculated MW	62622

**Anti-CERKL Antibody - Additional Information****Gene ID** 375298**Other Names**

Ceramide kinase-like protein

**Target/Specificity**

Recognizes endogenous levels of CERKL protein.

**Dilution**

WB~~WB (1/500 - 1/1000), IH (1/100 - 1/200)

IHC~~1:100~500

**Format**

Liquid in 0.42% Potassium phosphate, 0.87% Sodium chloride, pH 7.3, 30% glycerol, and 0.09% (W/V) sodium azide.

**Storage**

Store at -20 °C. Stable for 12 months from date of receipt

**Anti-CERKL Antibody - Protein Information****Name** CERKL**Function**

Has no detectable ceramide-kinase activity. Overexpression of CERKL protects cells from apoptosis in oxidative stress conditions.

**Cellular Location**

Cytoplasm. Nucleus, nucleolus. Note=Enriched in nucleoli. May shuttle between nucleus and cytoplasm. Isoform 5 is not enriched in the nucleoli

**Tissue Location**

Isoform 1 and isoform 2 are expressed in adult retina, liver and pancreas as well as in fetal brain,

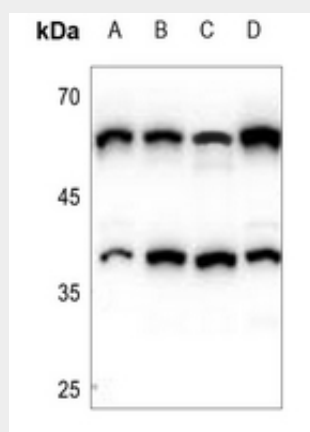
lung and kidney Isoform 3 is expressed in adult retina as well as in fetal lung and liver. Isoform 4 is expressed in adult retina, lung and kidney as well as in fetal lung and liver. Moderately expressed in retina, kidney, lung, testis, trachea, and pancreas. Weakly expressed in brain, placenta and liver.

### Anti-CERKL Antibody - Protocols

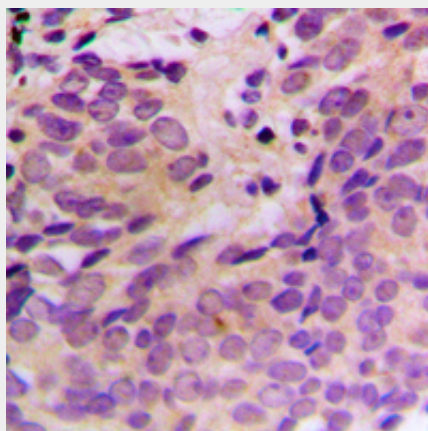
Provided below are standard protocols that you may find useful for product applications.

- [Western Blot](#)
- [Blocking Peptides](#)
- [Dot Blot](#)
- [Immunohistochemistry](#)
- [Immunofluorescence](#)
- [Immunoprecipitation](#)
- [Flow Cytometry](#)
- [Cell Culture](#)

### Anti-CERKL Antibody - Images



Western blot analysis of CERKL expression in HCT116 (A), SGC7901 (B), A549 (C), HEK293T (D) whole cell lysates.



Immunohistochemical analysis of CERKL staining in human prostate cancer formalin fixed paraffin embedded tissue section. The section was pre-treated using heat mediated antigen retrieval with sodium citrate buffer (pH 6.0). The section was then incubated with the antibody at room

temperature and detected using an HRP conjugated compact polymer system. DAB was used as the chromogen. The section was then counterstained with haematoxylin and mounted with DPX.

**Anti-CERKL Antibody - Background**

KLH-conjugated synthetic peptide encompassing a sequence within the center region of human CERKL. The exact sequence is proprietary.