

**Anti-CLK1 Antibody**  
**Rabbit polyclonal antibody to CLK1**  
**Catalog # AP60252****Specification**

---

**Anti-CLK1 Antibody - Product Information**

Application	WB, IF/IC, IHC
Primary Accession	<a href="#">P49759</a>
Other Accession	<a href="#">P22518</a>
Reactivity	Human, Mouse, Monkey
Host	Rabbit
Clonality	Polyclonal
Calculated MW	57291

**Anti-CLK1 Antibody - Additional Information****Gene ID** 1195**Other Names**

CLK; Dual specificity protein kinase CLK1; CDC-like kinase 1

**Target/Specificity**

Recognizes endogenous levels of CLK1 protein.

**Dilution**

WB~~WB (1/500 - 1/1000), IH (1/100 - 1/200), IF/IC (1/100 - 1/500)

IF/IC~~N/A

IHC~~1:100~500

**Format**

Liquid in 0.42% Potassium phosphate, 0.87% Sodium chloride, pH 7.3, 30% glycerol, and 0.09% (W/V) sodium azide.

**Storage**

Store at -20 °C. Stable for 12 months from date of receipt

**Anti-CLK1 Antibody - Protein Information****Name** CLK1 ([HGNC:2068](#))**Synonyms** CLK**Function**

Dual specificity kinase acting on both serine/threonine and tyrosine-containing substrates. Phosphorylates serine- and arginine- rich (SR) proteins of the spliceosomal complex and may be a constituent of a network of regulatory mechanisms that enable SR proteins to control RNA splicing. Phosphorylates: SRSF1, SRSF3 and PTPN1 (PubMed:<a href="http://www.uniprot.org/citations/10480872" target="\_blank">10480872</a>, PubMed:<a href="http://www.uniprot.org/citations/10480872" target="\_blank">10480872</a>)

[19168442](http://www.uniprot.org/citations/19168442)). Regulates the alternative splicing of tissue factor (F3) pre-mRNA in endothelial cells (PubMed:[19168442](http://www.uniprot.org/citations/19168442)).

**Cellular Location**

Nucleus {ECO:0000250|UniProtKB:P22518}.

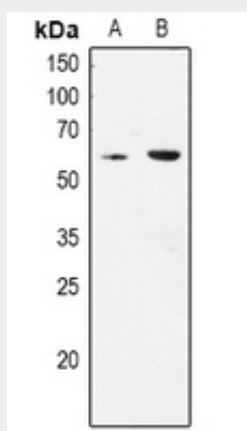
**Tissue Location**

Endothelial cells..

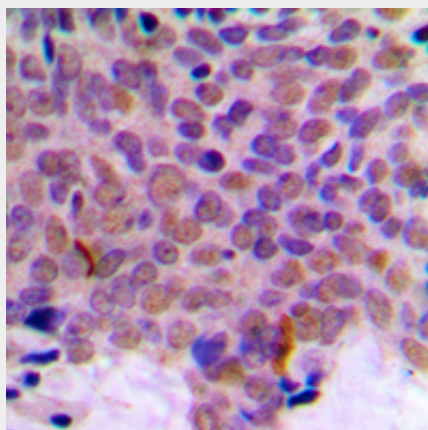
**Anti-CLK1 Antibody - Protocols**

Provided below are standard protocols that you may find useful for product applications.

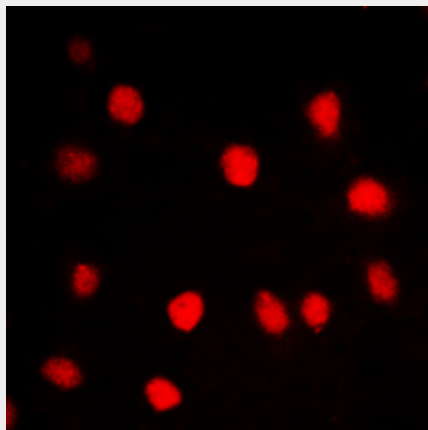
- [Western Blot](#)
- [Blocking Peptides](#)
- [Dot Blot](#)
- [Immunohistochemistry](#)
- [Immunofluorescence](#)
- [Immunoprecipitation](#)
- [Flow Cytometry](#)
- [Cell Culture](#)

**Anti-CLK1 Antibody - Images**

Western blot analysis of CLK1 expression in HEK293T (A), NIH3T3 (B) whole cell lysates.



Immunohistochemical analysis of CLK1 staining in human breast cancer formalin fixed paraffin embedded tissue section. The section was pre-treated using heat mediated antigen retrieval with sodium citrate buffer (pH 6.0). The section was then incubated with the antibody at room temperature and detected using an HRP conjugated compact polymer system. DAB was used as the chromogen. The section was then counterstained with haematoxylin and mounted with DPX.



Immunofluorescent analysis of CLK1 staining in HuvEc cells. Formalin-fixed cells were permeabilized with 0.1% Triton X-100 in TBS for 5-10 minutes and blocked with 3% BSA-PBS for 30 minutes at room temperature. Cells were probed with the primary antibody in 3% BSA-PBS and incubated overnight at 4 °C in a humidified chamber. Cells were washed with PBST and incubated with a DyLight 594-conjugated secondary antibody (red) in PBS at room temperature in the dark.

#### **Anti-CLK1 Antibody - Background**

KLH-conjugated synthetic peptide encompassing a sequence within the center region of human CLK1. The exact sequence is proprietary.