

Anti-Calponin 2 Antibody
Rabbit polyclonal antibody to Calponin 2
Catalog # AP60255**Specification**

Anti-Calponin 2 Antibody - Product Information

| | |
|-------------------|---------------------------|
| Application | WB, IF/IC |
| Primary Accession | Q99439 |
| Other Accession | Q08093 |
| Reactivity | Human, Mouse, Rat, Bovine |
| Host | Rabbit |
| Clonality | Polyclonal |
| Calculated MW | 33697 |

Anti-Calponin 2 Antibody - Additional Information**Gene ID** 1265**Other Names**

Calponin-2; Calponin H2, smooth muscle; Neutral calponin

Target/Specificity

KLH-conjugated synthetic peptide encompassing a sequence within the center region of human Calponin 2. The exact sequence is proprietary.

Dilution

WB~~WB (1/500 - 1/1000), IF/IC (1/100 - 1/500)

IF/IC~~N/A

Format

Liquid in 0.42% Potassium phosphate, 0.87% Sodium chloride, pH 7.3, 30% glycerol, and 0.09% (W/V) sodium azide.

Storage

Store at -20 °C. Stable for 12 months from date of receipt

Anti-Calponin 2 Antibody - Protein Information**Name** CNN2**Function**

Thin filament-associated protein that is implicated in the regulation and modulation of smooth muscle contraction. It is capable of binding to actin, calmodulin and tropomyosin. The interaction of calponin with actin inhibits the actomyosin Mg-ATPase activity.

Tissue Location

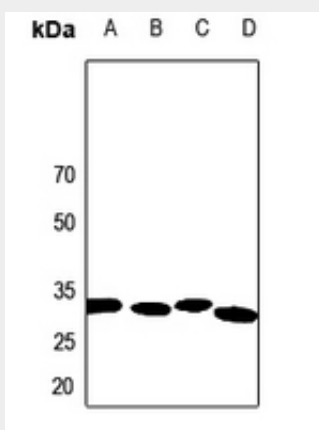
Heart and smooth muscle.

Anti-Calponin 2 Antibody - Protocols

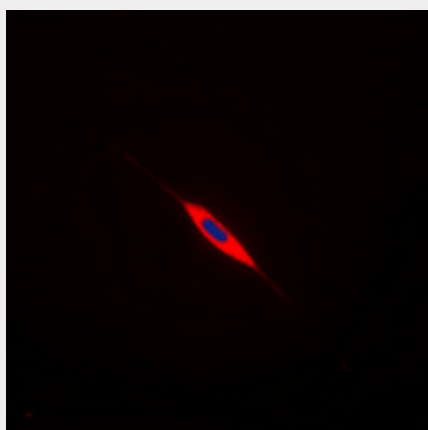
Provided below are standard protocols that you may find useful for product applications.

- [Western Blot](#)
- [Blocking Peptides](#)
- [Dot Blot](#)
- [Immunohistochemistry](#)
- [Immunofluorescence](#)
- [Immunoprecipitation](#)
- [Flow Cytometry](#)
- [Cell Culture](#)

Anti-Calponin 2 Antibody - Images



Western blot analysis of Calponin 2 expression in Hela (A), mouse muscle (B), rat heart (C), rat muscle (D) whole cell lysates.



Immunofluorescent analysis of Calponin 2 staining in HeLa cells. Formalin-fixed cells were permeabilized with 0.1% Triton X-100 in TBS for 5-10 minutes and blocked with 3% BSA-PBS for 30 minutes at room temperature. Cells were probed with the primary antibody in 3% BSA-PBS and incubated overnight at 4 °C in a humidified chamber. Cells were washed with PBST and incubated with a DyLight 594-conjugated secondary antibody (red) in PBS at room temperature in the dark. DAPI was used to stain the cell nuclei (blue).

Anti-Calponin 2 Antibody - Background

KLH-conjugated synthetic peptide encompassing a sequence within the center region of human Calponin 2. The exact sequence is proprietary.