

**Anti-ICER Antibody**  
**Rabbit polyclonal antibody to ICER**  
**Catalog # AP60256****Specification**

---

**Anti-ICER Antibody - Product Information**

Application	WB, IHC
Primary Accession	<a href="#">Q03060</a>
Other Accession	<a href="#">P27699</a>
Reactivity	Human, Mouse, Rat, Pig, Bovine, Dog
Host	Rabbit
Clonality	Polyclonal
Calculated MW	37006

**Anti-ICER Antibody - Additional Information****Gene ID** 1390**Other Names**

cAMP-responsive element modulator; Inducible cAMP early repressor; ICER

**Target/Specificity**

KLH-conjugated synthetic peptide encompassing a sequence within the center region of human ICER. The exact sequence is proprietary.

**Dilution**

WB~~WB (1/500 - 1/1000), IH (1/100 - 1/200)

IHC~~1:100~500

**Format**

Liquid in 0.42% Potassium phosphate, 0.87% Sodium chloride, pH 7.3, 30% glycerol, and 0.09% (W/V) sodium azide.

**Storage**

Store at -20 °C. Stable for 12 months from date of receipt

**Anti-ICER Antibody - Protein Information****Name** CREM ([HGNC:2352](#))**Function**

Transcriptional regulator that binds the cAMP response element (CRE), a sequence present in many viral and cellular promoters. Isoforms are either transcriptional activators or repressors. Plays a role in spermatogenesis and is involved in spermatid maturation (PubMed:&lt;a href="http://www.uniprot.org/citations/10373550" target="\_blank"&gt;10373550&lt;/a&gt;).

**Cellular Location**

Nucleus.

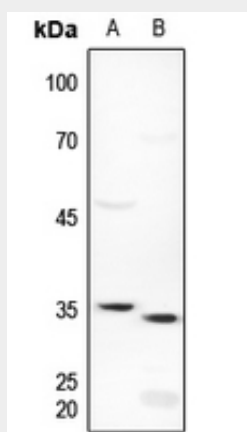
**Tissue Location**

Expressed in testes (round spermatids) (at protein level). Isoform 14 is the major activator form in testes

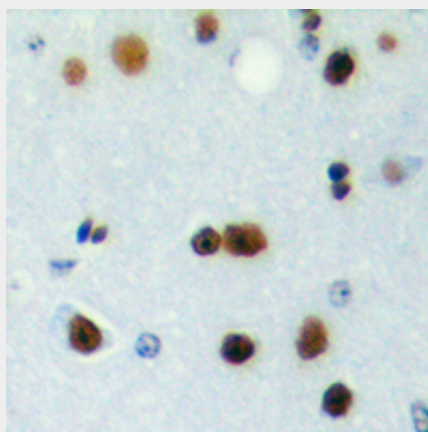
**Anti-ICER Antibody - Protocols**

Provided below are standard protocols that you may find useful for product applications.

- [Western Blot](#)
- [Blocking Peptides](#)
- [Dot Blot](#)
- [Immunohistochemistry](#)
- [Immunofluorescence](#)
- [Immunoprecipitation](#)
- [Flow Cytometry](#)
- [Cell Culture](#)

**Anti-ICER Antibody - Images**

Western blot analysis of ICER expression in mouse kidney (A), rat lung (B) whole cell lysates.



Immunohistochemical analysis of ICER staining in human brain formalin fixed paraffin embedded tissue section. The section was pre-treated using heat mediated antigen retrieval with sodium citrate buffer (pH 6.0). The section was then incubated with the antibody at room temperature and detected using an HRP conjugated compact polymer system. DAB was used as the chromogen. The section was then counterstained with haematoxylin and mounted with DPX.

**Anti-ICER Antibody - Background**

KLH-conjugated synthetic peptide encompassing a sequence within the center region of human ICER. The exact sequence is proprietary.