

Anti-Cystatin C Antibody
Rabbit polyclonal antibody to Cystatin C
Catalog # AP60258**Specification**

Anti-Cystatin C Antibody - Product Information

Application	WB
Primary Accession	P01034
Other Accession	P21460
Reactivity	Human, Mouse
Host	Rabbit
Clonality	Polyclonal
Calculated MW	15799

Anti-Cystatin C Antibody - Additional Information**Gene ID** 1471**Other Names**

Cystatin-C; Cystatin-3; Gamma-trace; Neuroendocrine basic polypeptide; Post-gamma-globulin

Target/Specificity

Recognizes endogenous levels of Cystatin C protein.

Dilution

WB~~WB (1/500 - 1/1000)

Format

Liquid in 0.42% Potassium phosphate, 0.87% Sodium chloride, pH 7.3, 30% glycerol, and 0.09% (W/V) sodium azide.

Storage

Store at -20 °C.Stable for 12 months from date of receipt

Anti-Cystatin C Antibody - Protein Information**Name** CST3**Function**

As an inhibitor of cysteine proteinases, this protein is thought to serve an important physiological role as a local regulator of this enzyme activity.

Cellular Location

Secreted.

Tissue LocationExpressed in submandibular and sublingual saliva but not in parotid saliva (at protein level).
Expressed in various body fluids, such as the cerebrospinal fluid and plasma. Expressed in highest

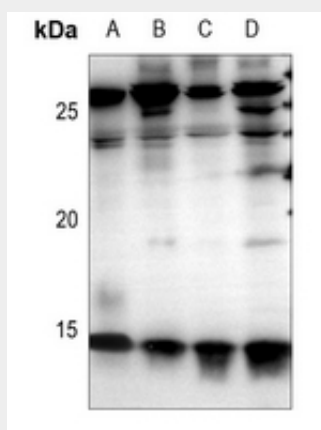
levels in the epididymis, vas deferens, brain, thymus, and ovary and the lowest in the submandibular gland

Anti-Cystatin C Antibody - Protocols

Provided below are standard protocols that you may find useful for product applications.

- [Western Blot](#)
- [Blocking Peptides](#)
- [Dot Blot](#)
- [Immunohistochemistry](#)
- [Immunofluorescence](#)
- [Immunoprecipitation](#)
- [Flow Cytometry](#)
- [Cell Culture](#)

Anti-Cystatin C Antibody - Images



Western blot analysis of Cystatin C expression in mouse brain (A), HepG2 (B), PC3 (C), A2780 (D) whole cell lysates.

Anti-Cystatin C Antibody - Background

KLH-conjugated synthetic peptide encompassing a sequence within the center region of human Cystatin C. The exact sequence is proprietary.