

Anti-Cathepsin Z Antibody
Rabbit polyclonal antibody to Cathepsin Z
Catalog # AP60260**Specification**

Anti-Cathepsin Z Antibody - Product Information

Application	WB, IHC
Primary Accession	Q9UBR2
Reactivity	Human, Rat
Host	Rabbit
Clonality	Polyclonal
Calculated MW	33868

Anti-Cathepsin Z Antibody - Additional Information**Gene ID** 1522**Other Names**

Cathepsin Z; Cathepsin P; Cathepsin X

Target/Specificity

Recognizes endogenous levels of Cathepsin Z protein.

Dilution

WB~~WB (1/500 - 1/1000), IH (1/100 - 1/200)

IHC~~1:100~500

Format

Liquid in 0.42% Potassium phosphate, 0.87% Sodium chloride, pH 7.3, 30% glycerol, and 0.09% (W/V) sodium azide.

Storage

Store at -20 °C.Stable for 12 months from date of receipt

Anti-Cathepsin Z Antibody - Protein Information**Name** CTSZ**Function**

Exhibits carboxy-monopeptidase as well as carboxy-dipeptidase activity (PubMed:10504234). Capable of producing kinin potentiating peptides (By similarity).

Cellular Location

Lysosome.

Tissue Location

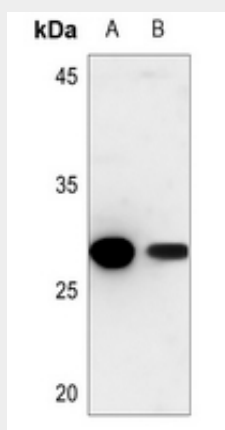
Widely expressed..

Anti-Cathepsin Z Antibody - Protocols

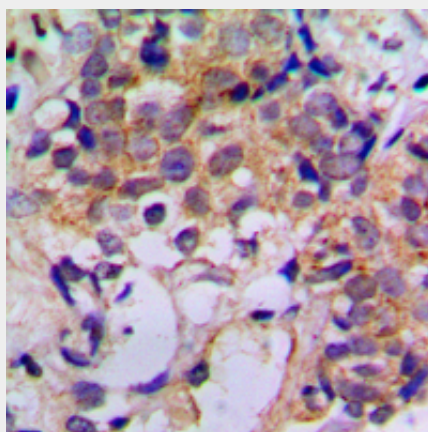
Provided below are standard protocols that you may find useful for product applications.

- [Western Blot](#)
- [Blocking Peptides](#)
- [Dot Blot](#)
- [Immunohistochemistry](#)
- [Immunofluorescence](#)
- [Immunoprecipitation](#)
- [Flow Cytometry](#)
- [Cell Culture](#)

Anti-Cathepsin Z Antibody - Images



Western blot analysis of Cathepsin Z expression in rat liver (A), rat kidney (B) whole cell lysates.



Immunohistochemical analysis of Cathepsin Z staining in human breast cancer formalin fixed paraffin embedded tissue section. The section was pre-treated using heat mediated antigen retrieval with sodium citrate buffer (pH 6.0). The section was then incubated with the antibody at room temperature and detected using an HRP conjugated compact polymer system. DAB was used as the chromogen. The section was then counterstained with haematoxylin and mounted with DPX.

Anti-Cathepsin Z Antibody - Background

KLH-conjugated synthetic peptide encompassing a sequence within the center region of human

Cathepsin Z. The exact sequence is proprietary.