

Anti-DBI Antibody
Rabbit polyclonal antibody to DBI
Catalog # AP60262**Specification**

Anti-DBI Antibody - Product Information

Application	WB
Primary Accession	P07108
Other Accession	P31786
Reactivity	Human, Mouse, Rat, Pig
Host	Rabbit
Clonality	Polyclonal
Calculated MW	10044

Anti-DBI Antibody - Additional Information**Gene ID** 1622**Other Names**

Acyl-CoA-binding protein; ACBP; Diazepam-binding inhibitor; DBI; Endozepine; EP

Target/Specificity

KLH-conjugated synthetic peptide encompassing a sequence within the C-term region of human DBI. The exact sequence is proprietary.

Dilution

WB~~WB (1/500 - 1/1000)

Format

Liquid in 0.42% Potassium phosphate, 0.87% Sodium chloride, pH 7.3, 30% glycerol, and 0.09% (W/V) sodium azide.

Storage

Store at -20 °C. Stable for 12 months from date of receipt

Anti-DBI Antibody - Protein Information**Name** DBI**Function**

Binds medium- and long-chain acyl-CoA esters with very high affinity and may function as an intracellular carrier of acyl-CoA esters. It is also able to displace diazepam from the benzodiazepine (BZD) recognition site located on the GABA type A receptor. It is therefore possible that this protein also acts as a neuropeptide to modulate the action of the GABA receptor.

Cellular Location

Endoplasmic reticulum. Golgi apparatus Note=Golgi localization is dependent on ligand binding (PubMed:17953517).

Tissue Location

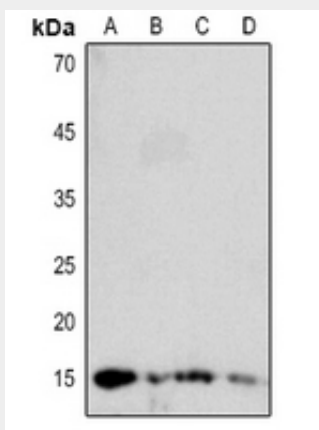
Isoform 1 is ubiquitous, with a moderate expression level. Isoform 2 is ubiquitous with high level in liver and adipose tissue. Isoform 3 is ubiquitous with strong expression in adipose tissue and heart.

Anti-DBI Antibody - Protocols

Provided below are standard protocols that you may find useful for product applications.

- [Western Blot](#)
- [Blocking Peptides](#)
- [Dot Blot](#)
- [Immunohistochemistry](#)
- [Immunofluorescence](#)
- [Immunoprecipitation](#)
- [Flow Cytometry](#)
- [Cell Culture](#)

Anti-DBI Antibody - Images



Western blot analysis of DBI expression in mouse liver (A), mouse kidney (B), mouse lung (C), rat liver (D) whole cell lysates.

Anti-DBI Antibody - Background

KLH-conjugated synthetic peptide encompassing a sequence within the C-term region of human DBI. The exact sequence is proprietary.