

Anti-DDX24 Antibody
Rabbit polyclonal antibody to DDX24
Catalog # AP60263**Specification**

Anti-DDX24 Antibody - Product Information

Application	WB
Primary Accession	O9GZR7
Other Accession	O9ESV0
Reactivity	Human, Mouse, Rat, Monkey
Host	Rabbit
Clonality	Polyclonal
Calculated MW	96332

Anti-DDX24 Antibody - Additional Information**Gene ID** 57062**Other Names**

ATP-dependent RNA helicase DDX24; DEAD box protein 24

Target/Specificity

Recognizes endogenous levels of DDX24 protein.

Dilution

WB~~WB (1/500 - 1/1000)

Format

Liquid in 0.42% Potassium phosphate, 0.87% Sodium chloride, pH 7.3, 30% glycerol, and 0.09% (W/V) sodium azide.

Storage

Store at -20 °C.Stable for 12 months from date of receipt

Anti-DDX24 Antibody - Protein Information**Name** DDX24**Function**

ATP-dependent RNA helicase that plays a role in various aspects of RNA metabolism including pre-mRNA splicing and is thereby involved in different biological processes such as cell cycle regulation or innate immunity (PubMed:24204270, PubMed:24980433). Plays an inhibitory role in TP53 transcriptional activity and subsequently in TP53 controlled cell growth arrest and senescence by inhibiting its EP300 mediated acetylation (PubMed:25867071). Negatively regulates cytosolic RNA-mediated innate immune signaling at least in part by affecting RIPK1/IRF7 interactions. Alternatively, possesses antiviral

activity by recognizing gammaherpesvirus transcripts in the context of lytic reactivation (PubMed:36298642). Plays an essential role in cell cycle regulation in vascular smooth muscle cells by interacting with and regulating FANCA (Fanconi anemia complementation group A) mRNA (By similarity).

Cellular Location

Cytoplasm. Nucleus

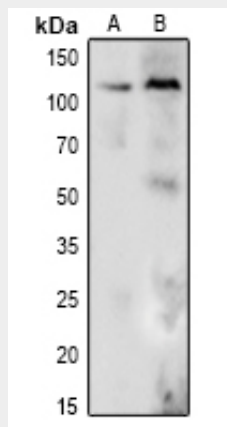
Tissue Location

Ubiquitous. Most abundant in heart and brain, but with lowest levels in thymus and small intestine

Anti-DDX24 Antibody - Protocols

Provided below are standard protocols that you may find useful for product applications.

- [Western Blot](#)
- [Blocking Peptides](#)
- [Dot Blot](#)
- [Immunohistochemistry](#)
- [Immunofluorescence](#)
- [Immunoprecipitation](#)
- [Flow Cytometry](#)
- [Cell Culture](#)

Anti-DDX24 Antibody - Images

Western blot analysis of DDX24 expression in Hela (A), HEK293T (B) whole cell lysates.

Anti-DDX24 Antibody - Background

KLH-conjugated synthetic peptide encompassing a sequence within the N-term region of human DDX24. The exact sequence is proprietary.