

Anti-DLX3 Antibody
Rabbit polyclonal antibody to DLX3
Catalog # AP60267**Specification**

Anti-DLX3 Antibody - Product Information

Application	WB, IF/IC, IHC
Primary Accession	O60479
Other Accession	Q64205
Reactivity	Human, Mouse, Rat, Pig, Bovine, SARS, Dog
Host	Rabbit
Clonality	Polyclonal
Calculated MW	31738

Anti-DLX3 Antibody - Additional Information**Gene ID** 1747**Other Names**

Homeobox protein DLX-3

Target/Specificity

Recognizes endogenous levels of DLX3 protein.

Dilution

WB~~WB (1/500 - 1/1000), IH (1/100 - 1/200), IF/IC (1/100 - 1/500)

IF/IC~~N/A

IHC~~1:100~500

Format

Liquid in 0.42% Potassium phosphate, 0.87% Sodium chloride, pH 7.3, 30% glycerol, and 0.09% (W/V) sodium azide.

Storage

Store at -20 °C.Stable for 12 months from date of receipt

Anti-DLX3 Antibody - Protein Information**Name** DLX3**Function**

Transcriptional activator (By similarity). Activates transcription of GNRHR, via binding to the downstream activin regulatory element (DARE) in the gene promoter (By similarity).

Cellular Location

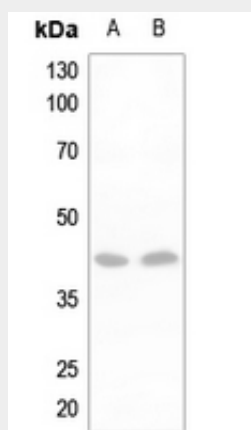
Nucleus {ECO:0000255|PROSITE-ProRule:PRU00108}. Cytoplasm {ECO:0000250|UniProtKB:Q64205}

Anti-DLX3 Antibody - Protocols

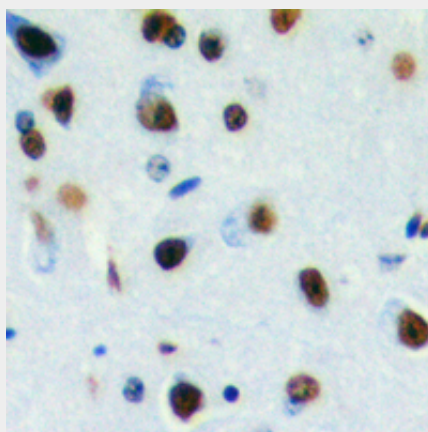
Provided below are standard protocols that you may find useful for product applications.

- [Western Blot](#)
- [Blocking Peptides](#)
- [Dot Blot](#)
- [Immunohistochemistry](#)
- [Immunofluorescence](#)
- [Immunoprecipitation](#)
- [Flow Cytometry](#)
- [Cell Culture](#)

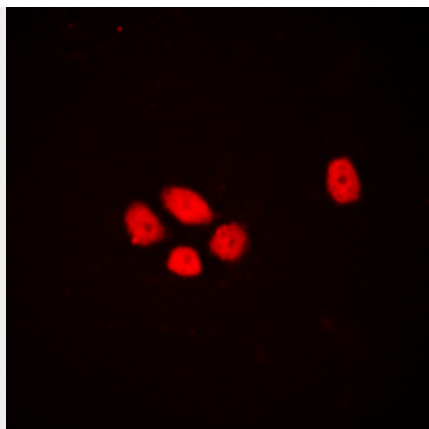
Anti-DLX3 Antibody - Images



Western blot analysis of DLX3 expression in mouse testis (A), rat testis (B) whole cell lysates.



Immunohistochemical analysis of DLX3 staining in human brain formalin fixed paraffin embedded tissue section. The section was pre-treated using heat mediated antigen retrieval with sodium citrate buffer (pH 6.0). The section was then incubated with the antibody at room temperature and detected using an HRP conjugated compact polymer system. DAB was used as the chromogen. The section was then counterstained with haematoxylin and mounted with DPX.



Immunofluorescent analysis of DLX3 staining in HEK293T cells. Formalin-fixed cells were permeabilized with 0.1% Triton X-100 in TBS for 5-10 minutes and blocked with 3% BSA-PBS for 30 minutes at room temperature. Cells were probed with the primary antibody in 3% BSA-PBS and incubated overnight at 4 °C in a humidified chamber. Cells were washed with PBST and incubated with a DyLight 594-conjugated secondary antibody (red) in PBS at room temperature in the dark.

Anti-DLX3 Antibody - Background

KLH-conjugated synthetic peptide encompassing a sequence within the center region of human DLX3. The exact sequence is proprietary.