

**Anti-Estrogen Receptor beta Antibody**  
**Rabbit polyclonal antibody to Estrogen Receptor beta**  
**Catalog # AP60282****Specification**

---

**Anti-Estrogen Receptor beta Antibody - Product Information**

Application	WB, IF/IC
Primary Accession	<a href="#">O92731</a>
Other Accession	<a href="#">O08537</a>
Reactivity	Human, Mouse, Rat, Dog
Host	Rabbit
Clonality	Polyclonal
Calculated MW	59216

**Anti-Estrogen Receptor beta Antibody - Additional Information****Gene ID** 2100**Other Names**

ESTRB; NR3A2; Estrogen receptor beta; ER-beta; Nuclear receptor subfamily 3 group A member 2

**Target/Specificity**

Recognizes endogenous levels of Estrogen Receptor beta protein.

**Dilution**

WB~~WB (1/500 - 1/1000), IF/IC (1/100 - 1/500)

IF/IC~~N/A

**Format**

Liquid in 0.42% Potassium phosphate, 0.87% Sodium chloride, pH 7.3, 30% glycerol, and 0.09% (W/V) sodium azide.

**Storage**

Store at -20 °C. Stable for 12 months from date of receipt

**Anti-Estrogen Receptor beta Antibody - Protein Information****Name** ESR2**Synonyms** ESRB, NR3A2**Function**

Nuclear hormone receptor. Binds estrogens with an affinity similar to that of ESR1/ER-alpha, and activates expression of reporter genes containing estrogen response elements (ERE) in an estrogen- dependent manner (PubMed: <a href="http://www.uniprot.org/citations/20074560" target="\_blank">20074560</a>).

**Cellular Location**

Nucleus {ECO:0000255|PROSITE-ProRule:PRU00407, ECO:0000269|PubMed:19126643, ECO:0000269|PubMed:20074560}

### Tissue Location

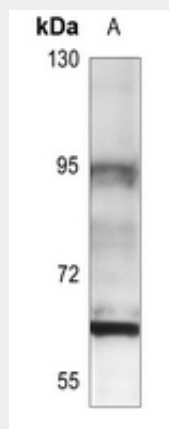
[Isoform 1]: Expressed in testis and ovary, and at a lower level in heart, brain, placenta, liver, skeletal muscle, spleen, thymus, prostate, colon, bone marrow, mammary gland and uterus Also found in uterine bone, breast, and ovarian tumor cell lines, but not in colon and liver tumors. [Isoform 4]: Expressed in the testis. [Isoform 6]: Expressed in testis, placenta, skeletal muscle, spleen and leukocytes, and at a lower level in heart, lung, liver, kidney, pancreas, thymus, prostate, colon, small intestine, bone marrow, mammary gland and uterus. Not expressed in brain.

### Anti-Estrogen Receptor beta Antibody - Protocols

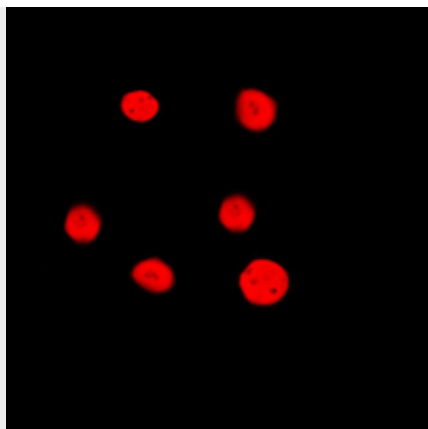
Provided below are standard protocols that you may find useful for product applications.

- [Western Blot](#)
- [Blocking Peptides](#)
- [Dot Blot](#)
- [Immunohistochemistry](#)
- [Immunofluorescence](#)
- [Immunoprecipitation](#)
- [Flow Cytometry](#)
- [Cell Culture](#)

### Anti-Estrogen Receptor beta Antibody - Images



Western blot analysis of Estrogen Receptor beta expression in U87MG (A) whole cell lysates.



Immunofluorescent analysis of Estrogen Receptor beta staining in HeLa cells. Formalin-fixed cells were permeabilized with 0.1% Triton X-100 in TBS for 5-10 minutes and blocked with 3% BSA-PBS for 30 minutes at room temperature. Cells were probed with the primary antibody in 3% BSA-PBS and incubated overnight at 4 °C in a humidified chamber. Cells were washed with PBST and incubated with a DyLight 594-conjugated secondary antibody (red) in PBS at room temperature in the dark.

#### **Anti-Estrogen Receptor beta Antibody - Background**

KLH-conjugated synthetic peptide encompassing a sequence within the center region of human Estrogen Receptor beta. The exact sequence is proprietary.