

**Anti-FRS2 (pY436) Antibody**  
**Rabbit polyclonal antibody to FRS2 (pY436)**  
**Catalog # AP60287**

**Specification**

---

**Anti-FRS2 (pY436) Antibody - Product Information**

Application	WB, IHC
Primary Accession	<a href="#">Q8WU20</a>
Other Accession	<a href="#">Q8C180</a>
Reactivity	Human, Mouse
Host	Rabbit
Clonality	Polyclonal
Calculated MW	57029

**Anti-FRS2 (pY436) Antibody - Additional Information**

**Gene ID** 10818

**Other Names**

Fibroblast growth factor receptor substrate 2; FGFR substrate 2; FGFR-signaling adaptor SNT;  
Suc1-associated neurotrophic factor target 1; SNT-1

**Target/Specificity**

Recognizes endogenous levels of FRS2 (pY436) protein.

**Dilution**

WB~~WB (1/500 - 1/1000), IH (1/100 - 1/200)

IHC~~1:100~500

**Format**

Liquid in 0.42% Potassium phosphate, 0.87% Sodium chloride, pH 7.3, 30% glycerol, and 0.09% (W/V) sodium azide.

**Storage**

Store at -20 °C.Stable for 12 months from date of receipt

**Anti-FRS2 (pY436) Antibody - Protein Information**

**Name** FRS2

**Function**

Adapter protein that links activated FGR and NGF receptors to downstream signaling pathways. Plays an important role in the activation of MAP kinases and in the phosphorylation of PIK3R1, the regulatory subunit of phosphatidylinositol 3-kinase, in response to ligand-mediated activation of FGFR1. Modulates signaling via SHC1 by competing for a common binding site on NTRK1.

**Cellular Location**

Endomembrane system. Note=Cytoplasmic, membrane- bound

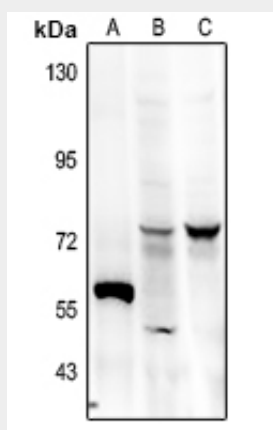
**Tissue Location**

Highly expressed in heart, brain, spleen, lung, liver, skeletal muscle, kidney and testis

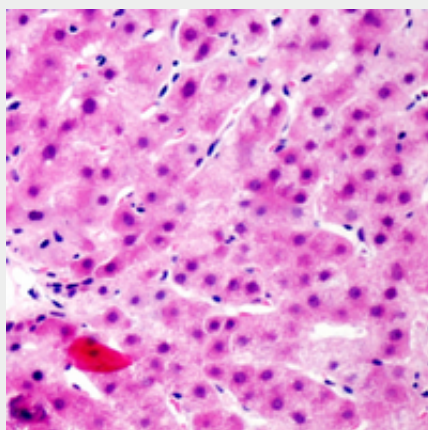
**Anti-FRS2 (pY436) Antibody - Protocols**

Provided below are standard protocols that you may find useful for product applications.

- [Western Blot](#)
- [Blocking Peptides](#)
- [Dot Blot](#)
- [Immunohistochemistry](#)
- [Immunofluorescence](#)
- [Immunoprecipitation](#)
- [Flow Cytometry](#)
- [Cell Culture](#)

**Anti-FRS2 (pY436) Antibody - Images**

Western blot analysis of FRS2 (pY436) expression in U87MG (A), Hela (B), PC12 (C) whole cell lysates.



Immunohistochemical analysis of FRS2 (pY436) staining in human liver formalin fixed paraffin embedded tissue section. The section was pre-treated using heat mediated antigen retrieval with sodium citrate buffer (pH 6.0). The section was then incubated with the antibody at room temperature and detected using an HRP conjugated compact polymer system. DAB was used as the chromogen. The section was then counterstained with haematoxylin and mounted with DPX.

**Anti-FRS2 (pY436) Antibody - Background**

KLH-conjugated synthetic peptide encompassing a sequence within the C-term region of human FRS2 (pY436). The exact sequence is proprietary.