

Anti-GATA1 (pS310) Antibody
Rabbit polyclonal antibody to GATA1 (pS310)
Catalog # AP60290

Specification

Anti-GATA1 (pS310) Antibody - Product Information

Application	WB, IF/IC
Primary Accession	P15976
Other Accession	P17679
Reactivity	Human, Mouse, Rat, Monkey, Pig, SARS
Host	Rabbit
Clonality	Polyclonal
Calculated MW	42751

Anti-GATA1 (pS310) Antibody - Additional Information

Gene ID 2623

Other Names

ERYF1; GF1; Erythroid transcription factor; Eryf1; GATA-binding factor 1; GATA-1; GF-1; NF-E1 DNA-binding protein

Target/Specificity

KLH-conjugated synthetic peptide encompassing a sequence within the C-term region of human GATA1 (pS310). The exact sequence is proprietary.

Dilution

WB~~WB (1/500 - 1/1000), IF/IC (1/100 - 1/500)
IF/IC~~N/A

Format

Liquid in 0.42% Potassium phosphate, 0.87% Sodium chloride, pH 7.3, 30% glycerol, and 0.09% (W/V) sodium azide.

Storage

Store at -20 °C. Stable for 12 months from date of receipt

Anti-GATA1 (pS310) Antibody - Protein Information

Name GATA1

Synonyms ERYF1, GF1

Function

Transcriptional activator or repressor which serves as a general switch factor for erythroid development (PubMed: 35030251). It binds to DNA sites with the consensus sequence 5'-[AT]GATA[AG]-3' within regulatory regions of globin genes and of other genes expressed in

erythroid cells. Activates the transcription of genes involved in erythroid differentiation of K562 erythroleukemia cells, including HBB, HBG1/2, ALAS2 and HMBS (PubMed:24245781).

Cellular Location

Nucleus.

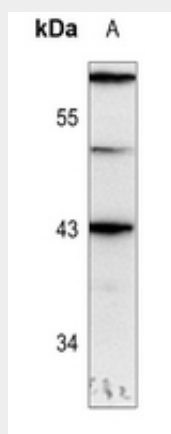
Tissue Location

Erythrocytes..

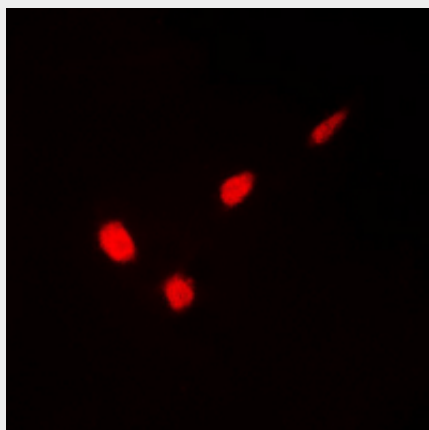
Anti-GATA1 (pS310) Antibody - Protocols

Provided below are standard protocols that you may find useful for product applications.

- [Western Blot](#)
- [Blocking Peptides](#)
- [Dot Blot](#)
- [Immunohistochemistry](#)
- [Immunofluorescence](#)
- [Immunoprecipitation](#)
- [Flow Cytometry](#)
- [Cell Culture](#)

Anti-GATA1 (pS310) Antibody - Images

Western blot analysis of GATA1 (pS310) expression in K562 (A) whole cell lysates.



Immunofluorescent analysis of GATA1 (pS310) staining in MCF7 cells. Formalin-fixed cells were permeabilized with 0.1% Triton X-100 in TBS for 5-10 minutes and blocked with 3% BSA-PBS for 30 minutes at room temperature. Cells were probed with the primary antibody in 3% BSA-PBS and incubated overnight at 4 °C in a humidified chamber. Cells were washed with PBST and incubated with a DyLight 594-conjugated secondary antibody (red) in PBS at room temperature in the dark. DAPI was used to stain the cell nuclei (blue).

Anti-GATA1 (pS310) Antibody - Background

KLH-conjugated synthetic peptide encompassing a sequence within the C-term region of human GATA1 (pS310). The exact sequence is proprietary.