

Anti-GCLM Antibody
Rabbit polyclonal antibody to GCLM
Catalog # AP60293

Specification

Anti-GCLM Antibody - Product Information

Application	WB, IHC
Primary Accession	P48507
Other Accession	O09172
Reactivity	Human, Mouse, Rat, Bovine
Host	Rabbit
Clonality	Polyclonal
Calculated MW	30727

Anti-GCLM Antibody - Additional Information

Gene ID 2730

Other Names

GLCLR; Glutamate--cysteine ligase regulatory subunit; GCS light chain; Gamma-ECS regulatory subunit; Gamma-glutamylcysteine synthetase regulatory subunit; Glutamate--cysteine ligase modifier subunit

Target/Specificity

KLH-conjugated synthetic peptide encompassing a sequence within the center region of human GCLM. The exact sequence is proprietary.

Dilution

WB~~WB (1/500 - 1/1000), IH (1/100 - 1/200)
IHC~~1:100~500

Format

Liquid in 0.42% Potassium phosphate, 0.87% Sodium chloride, pH 7.3, 30% glycerol, and 0.09% (W/V) sodium azide.

Storage

Store at -20 °C. Stable for 12 months from date of receipt

Anti-GCLM Antibody - Protein Information

Name GCLM

Synonyms GLCLR

Tissue Location

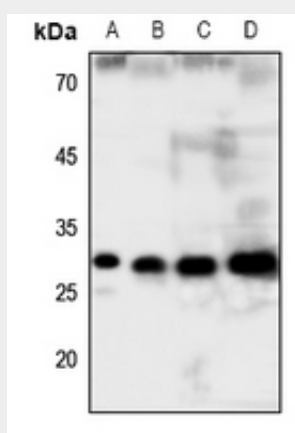
In all tissues examined. Highest levels in skeletal muscle

Anti-GCLM Antibody - Protocols

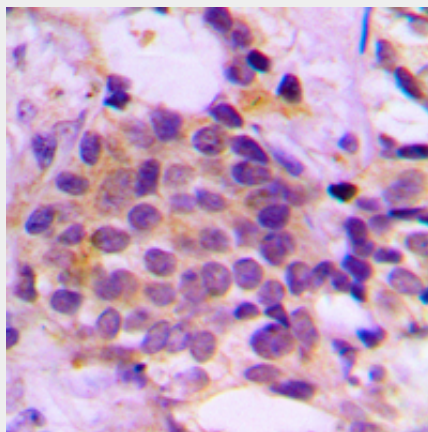
Provided below are standard protocols that you may find useful for product applications.

- [Western Blot](#)
- [Blocking Peptides](#)
- [Dot Blot](#)
- [Immunohistochemistry](#)
- [Immunofluorescence](#)
- [Immunoprecipitation](#)
- [Flow Cytometry](#)
- [Cell Culture](#)

Anti-GCLM Antibody - Images



Western blot analysis of GCLM expression in HEK293T (A), mouse liver (B), rat liver (C), rat kidney (D) whole cell lysates.



Immunohistochemical analysis of GCLM staining in human prostate cancer formalin fixed paraffin embedded tissue section. The section was pre-treated using heat mediated antigen retrieval with sodium citrate buffer (pH 6.0). The section was then incubated with the antibody at room temperature and detected using an HRP conjugated compact polymer system. DAB was used as the chromogen. The section was then counterstained with haematoxylin and mounted with DPX.

Anti-GCLM Antibody - Background

KLH-conjugated synthetic peptide encompassing a sequence within the center region of human GCLM. The exact sequence is proprietary.