

Anti-GNL3L Antibody
Rabbit polyclonal antibody to GNL3L
Catalog # AP60297**Specification**

Anti-GNL3L Antibody - Product Information

Application	WB, IH
Primary Accession	O9NVN8
Other Accession	Q6PGG6
Reactivity	Human, Mouse, Bovine
Host	Rabbit
Clonality	Polyclonal
Calculated MW	65573

Anti-GNL3L Antibody - Additional Information**Gene ID** 54552**Other Names**

Guanine nucleotide-binding protein-like 3-like protein

Target/Specificity

Recognizes endogenous levels of GNL3L protein.

Dilution

WB~~WB (1/500 - 1/1000), IH (1/100 - 1/200)

IH~~WB (1/500 - 1/1000), IH (1/100 - 1/200)

Format

Liquid in 0.42% Potassium phosphate, 0.87% Sodium chloride, pH 7.3, 30% glycerol, and 0.09% (W/V) sodium azide.

Storage

Store at -20 °C. Stable for 12 months from date of receipt

Anti-GNL3L Antibody - Protein Information**Name** GNL3L**Function**

Stabilizes TERF1 telomeric association by preventing TERF1 recruitment by PML. Stabilizes TERF1 protein by preventing its ubiquitination and hence proteasomal degradation. Does so by interfering with TERF1-binding to FBXO4 E3 ubiquitin-protein ligase. Required for cell proliferation. By stabilizing TRF1 protein during mitosis, promotes metaphase-to-anaphase transition. Stabilizes MDM2 protein by preventing its ubiquitination, and hence proteasomal degradation. By acting on MDM2, may affect TP53 activity. Required for normal processing of ribosomal pre-rRNA. Binds GTP.

Cellular Location

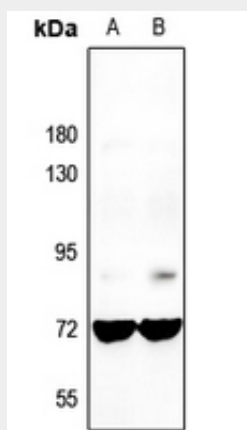
Nucleus, nucleolus.

Anti-GNL3L Antibody - Protocols

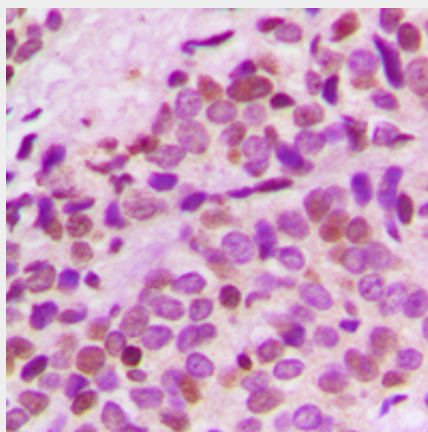
Provided below are standard protocols that you may find useful for product applications.

- [Western Blot](#)
- [Blocking Peptides](#)
- [Dot Blot](#)
- [Immunohistochemistry](#)
- [Immunofluorescence](#)
- [Immunoprecipitation](#)
- [Flow Cytometry](#)
- [Cell Culture](#)

Anti-GNL3L Antibody - Images



Western blot analysis of GNL3L expression in H1792 (A), MCF7 (B) whole cell lysates.



Immunohistochemical analysis of GNL3L staining in human breast cancer formalin fixed paraffin embedded tissue section. The section was pre-treated using heat mediated antigen retrieval with sodium citrate buffer (pH 6.0). The section was then incubated with the antibody at room temperature and detected using an HRP conjugated compact polymer system. DAB was used as the chromogen. The section was then counterstained with haematoxylin and mounted with DPX.

Anti-GNL3L Antibody - Background

KLH-conjugated synthetic peptide encompassing a sequence within the center region of human GNL3L. The exact sequence is proprietary.