

Anti-HOXC6 Antibody
Rabbit polyclonal antibody to HOXC6
Catalog # AP60319**Specification**

Anti-HOXC6 Antibody - Product Information

Application	WB, IF/IC, IHC
Primary Accession	P09630
Other Accession	P10629
Reactivity	Human, Mouse, Rat, Monkey, SARS
Host	Rabbit
Clonality	Polyclonal
Calculated MW	26915

Anti-HOXC6 Antibody - Additional Information**Gene ID** 3223**Other Names**HOX3C; Homeobox protein Hox-C6; Homeobox protein CP25; Homeobox protein HHO.C8;
Homeobox protein Hox-3C**Target/Specificity**

KLH-conjugated synthetic peptide encompassing a sequence within the C-term region of human HOXC6. The exact sequence is proprietary.

Dilution

WB~~WB (1/500 - 1/1000), IH (1/100 - 1/200), IF/IC (1/100 - 1/500)

IF/IC~~N/A

IHC~~1:100~500

Format

Liquid in 0.42% Potassium phosphate, 0.87% Sodium chloride, pH 7.3, 30% glycerol, and 0.09% (W/V) sodium azide.

Storage

Store at -20 °C. Stable for 12 months from date of receipt

Anti-HOXC6 Antibody - Protein Information**Name** HOXC6**Synonyms** HOX3C**Function**

Sequence-specific transcription factor which is part of a developmental regulatory system that provides cells with specific positional identities on the anterior-posterior axis.

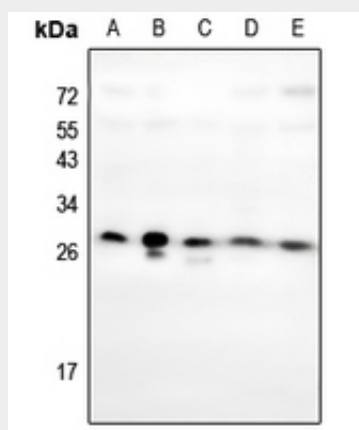
Cellular Location

Nucleus.

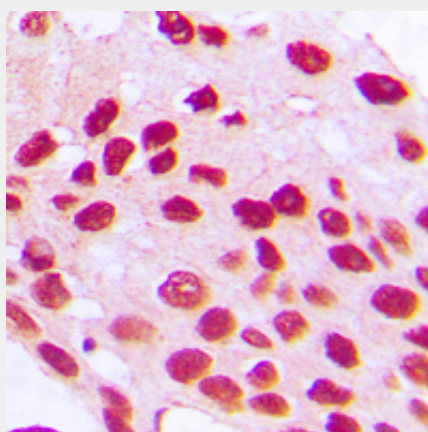
Anti-HOXC6 Antibody - Protocols

Provided below are standard protocols that you may find useful for product applications.

- [Western Blot](#)
- [Blocking Peptides](#)
- [Dot Blot](#)
- [Immunohistochemistry](#)
- [Immunofluorescence](#)
- [Immunoprecipitation](#)
- [Flow Cytometry](#)
- [Cell Culture](#)

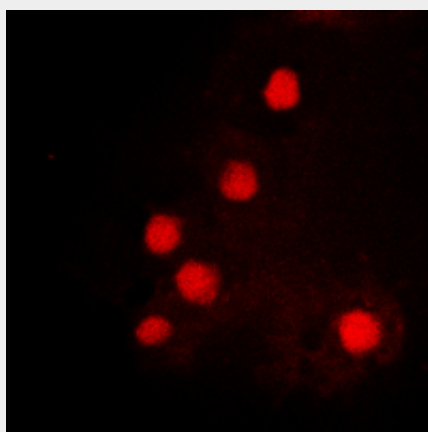
Anti-HOXC6 Antibody - Images

Western blot analysis of HOXC6 expression in A2780 (A), HEK293T (B), PC12 (C), 3T3L1 (D), PC3 (E) whole cell lysates.



Immunohistochemical analysis of HOXC6 staining in human prostate cancer formalin fixed paraffin embedded tissue section. The section was pre-treated using heat mediated antigen retrieval with sodium citrate buffer (pH 6.0). The section was then incubated with the antibody at room temperature and detected using an HRP conjugated compact polymer system. DAB was used as the chromogen. The section was then counterstained with haematoxylin and mounted

with DPX.



Immunofluorescent analysis of HOXC6 staining in K562 cells. Formalin-fixed cells were permeabilized with 0.1% Triton X-100 in TBS for 5-10 minutes and blocked with 3% BSA-PBS for 30 minutes at room temperature. Cells were probed with the primary antibody in 3% BSA-PBS and incubated overnight at 4 °C in a humidified chamber. Cells were washed with PBST and incubated with a DyLight 594-conjugated secondary antibody (red) in PBS at room temperature in the dark.

Anti-HOXC6 Antibody - Background

KLH-conjugated synthetic peptide encompassing a sequence within the C-term region of human HOXC6. The exact sequence is proprietary.